

Full Cone Spray Nozzles Series



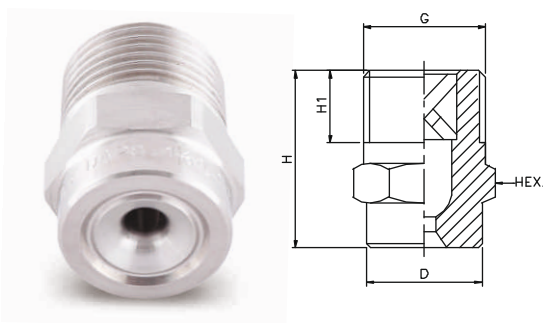
APPLICATION

- Absorption
- Chemical process engineering
- Chlorine precipitation
- Cleaning
- Cooling
- Desuperheating
- Dust control
- Fire protection
- Foam control
- Gas treatment
- Spraying onto mats in air
- Washers
- Spraying over packings
- Surface spraying
- Water treatment and many others...

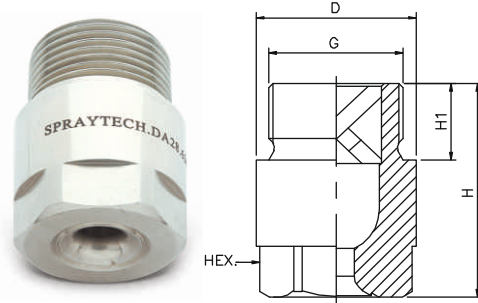
DA Series Full Cone Spray Nozzles



(Male)



Design for 1/8", 1/4", 3/8" & 1/2"



Design for 3/4" & 2"

Full Cone Spray Nozzle form complete spray coverage in a round area. It provides an uniform spray distribution of medium to large size drops resulting from their vane design which features large flow passage and control characteristics.

Characteristic : Internal vane design features large flow passage and fine control.

Design : Removable vane, Axial flow.

Type : Round pattern, Threaded connection.

MODEL NO.		CONNECTION END										FLOW CAPACITY IN LPM AT DIFFERENT PRESSURE						G/A DIMENSION. MM					
		1/8"	1/4"	3/8"	1/2"	3/4"	1"	1 1/4"	1 1/2"	2"	ORIFICE SIZE (mm)												PRESSURE [BAR]
SPRAY ANGLE		BSP	BSP	BSP	BSP	BSP	BSP	BSP	BSP	BSP	ORIFICE SIZE (mm)	0.5	1.0	2.0	3.0	5.0	7.0	10.0	CONN.	H	H1	D	HEX
15°	30°																						
DA11.100	DA12.100	●									1.2	0.50	0.71	1.00	1.22	1.58	1.87	2.24	1/8"	18	6.5	10	11
DA11.150	DA12.150	●									1.5	0.75	1.06	1.50	1.84	2.37	2.81	3.35	Weight (Metals) = 9 gms. Approx				
DA11.175	DA12.175	●									1.6	0.87	1.24	1.75	2.14	2.77	3.27	3.91	1/4"	22	10	13	14
DA11.200	DA12.200	●									1.7	1.00	1.41	2.00	2.45	3.16	3.74	4.47	Weight (Metals) = 17 gms. Approx				
DA11.250	DA12.250	●									1.9	1.25	1.77	2.50	3.06	3.95	4.68	5.59	3/8"	25	10	16	17
DA11.300	DA12.300	●									2.0	1.50	2.12	3.00	3.67	4.74	5.61	6.71	Weight (Metals) = 30 gms. Approx				
DA11.350	DA12.350	●									2.3	1.75	2.47	3.50	4.29	5.53	6.55	7.83	1/2"	32	13.2	21	22
DA11.400	DA12.400	●									2.5	2.00	2.83	4.00	4.90	6.32	7.48	8.94	Weight (Metals) = 66 gms. Approx				
DA11.475	DA12.475	●	●								2.7	2.37	3.36	4.75	5.82	7.51	8.89	10.62	3/4"	42	15	32	27
DA11.650	DA12.650		●								3.1	3.25	4.60	6.50	7.96	10.28	12.16	14.53	Weight (Metals) = 155 gms. Approx				
DA11.800	DA12.800		●								3.5	4.00	5.66	8.00	9.80	12.65	14.97	17.89	1"	56	17	39	36
DA21.100	DA22.100		●	●							3.9	5.00	7.07	10.00	12.25	15.81	18.71	22.36	Weight (Metals) = 367 gms. Approx				
DA21.125	DA22.125			●							4.3	6.25	8.84	12.50	15.31	19.76	23.39	27.95	1 1/4"	74	19	49	41
DA21.160	DA22.160			●	●						4.9	8.00	11.31	16.00	19.60	25.30	29.93	35.78	Weight (Metals) = 670 gms. Approx				
DA21.180	DA22.180				●						5.2	9.00	12.73	18.00	22.05	28.46	33.67	33.67	1 1/2"	85	22	59	50
DA21.200	DA22.200				●						5.5	10.00	14.14	20.00	24.49	31.62	37.42	44.72	Weight (Metals) = 1172 gms. Approx				
DA21.225	DA22.225				●						5.8	11.25	15.91	22.50	27.56	35.58	42.09	50.31	2"	106	24	68	60
DA21.250	DA22.250				●	●					6.1	12.50	17.68	25.00	30.62	39.53	46.77	55.90	Weight (Metals) = 1896 gms. Approx				
DA21.320	DA22.320					●					6.9	16.00	22.63	32.00	39.19	50.60	59.87	71.55					
DA21.400	DA22.400					●	●				7.7	20.00	28.28	40.00	48.99	63.25	74.83	89.44					
DA21.520	DA22.520						●	●			8.8	26.00	36.77	52.00	63.69	82.22	97.28	116.28					
DA21.650	DA22.650							●	●		9.9	32.50	45.96	65.00	79.61	102.77	121.60	145.34					
DA21.720	DA22.720							●	●		10.4	36.00	50.91	72.00	88.18	113.8	134.7	161.00					
DA21.800	DA22.800							●	●		11.5	40.00	56.57	80.00	97.98	126.49	149.67	178.89					
DA31.100	DA32.100								●	●	12.9	50.00	70.71	100.0	122.47	158.11	187.08	223.61					
DA31.118	DA32.118								●	●	14.0	59.00	83.44	118.0	144.52	186.57	220.76	263.86					
DA31.130	DA32.130								●	●	14.7	65.00	91.92	130.0	159.22	205.55	243.21	290.69					
DA31.160	DA32.160									●	16.3	80.00	113.14	160.0	195.96	252.98	299.33	357.77					
DA31.200	DA32.200									●	18.2	100	141.42	200.0	244.95	316.23	374.17	447.21					
DA31.227	DA32.227									●	19.4	113.5	160.51	227.0	278.02	358.92	424.68	507.59					
DA31.250	DA32.250									●	20.4	125	176.78	250.0	306.19	395.19	467.71	559.02					
DA31.337	DA32.337									●	23.7	168.5	238.29	337.0	412.74	532.84	630.47	753.55					

End Connection : X – BSP, Y - BSPT, Z – NPT Available.

DA Series Full Cone Spray Nozzles

(Male)

45° SPRAY ANGLE	CONNECTION END						ORIFICE SIZE (mm)	FLOW CAPACITY IN LPM AT DIFFERENT PRESSURE							G/A DIMENSION. MM				
	1/8"	1/4"	3/8"	1/2"	3/4"	1"		PRESSURE [BAR]							CONN.	H	H1	D	HEX
MODEL NO.	BSP	BSP	BSP	BSP	BSP	BSP	0.5	1.0	2.0	3.0	5.0	7.0	10.0						
DA13.100	●						1.2	0.50	0.71	1.00	1.22	1.58	1.87	2.24	1/8"	18	6.5	10	11
DA13.150	●						1.5	0.75	1.06	1.50	1.84	2.37	2.81	3.35	Weight (Metals) = 9 gms. Approx				
DA13.175	●						1.6	0.87	1.24	1.75	2.14	2.77	3.27	3.91	1/4"	22	10	13	14
DA13.200	●						1.7	1.00	1.41	2.00	2.45	3.16	3.74	4.47	Weight (Metals) = 17 gms. Approx				
DA13.250	●	●					1.9	1.25	1.77	2.50	3.06	3.95	4.68	5.59	3/8"	25	10	16	17
DA13.300		●					2.0	1.50	2.12	3.00	3.67	4.74	5.61	6.71	Weight (Metals) = 30 gms. Approx				
DA13.350		●	●				2.2	1.75	2.47	3.50	4.29	5.53	6.55	7.83	1/2"	32	13.2	21	22
DA13.400		●	●				2.4	2.00	2.83	4.00	4.90	6.32	7.48	8.94	Weight (Metals) = 66 gms. Approx				
DA13.475		●	●				2.6	2.37	3.36	4.75	5.82	7.51	8.89	10.62	3/4"	42	15	32	27
DA13.650			●	●			3.1	3.25	4.60	6.50	7.96	10.28	12.16	14.53	Weight (Metals) = 155 gms. Approx				
DA13.800				●			3.4	4.00	5.66	8.00	9.80	12.65	14.97	17.89	1"	56	17	39	36
DA23.100				●			3.8	5.00	7.07	10.00	12.25	15.81	18.71	22.36	Weight (Metals) = 367 gms. Approx				
DA23.125				●	●		4.2	6.25	8.84	12.50	15.31	19.76	23.39	27.95					
DA23.160				●	●		4.8	8.00	11.31	16.00	19.60	25.30	29.93	35.78					
DA23.180					●		5.2	9.00	12.73	18.00	22.05	28.46	33.67	40.25					
DA23.200					●		5.4	10.00	14.14	20.00	24.49	31.62	37.42	44.72					
DA23.225						●	5.7	11.25	15.91	22.50	27.56	35.58	42.09	50.31					
DA23.250						●	6.0	12.50	17.68	25.00	30.62	39.53	46.77	55.90					
DA23.320						●	6.8	16.00	22.63	32.00	39.19	50.60	59.87	71.55					

60° SPRAY ANGLE	CONNECTION END						ORIFICE SIZE (mm)	FLOW CAPACITY IN LPM AT DIFFERENT PRESSURE							G/A DIMENSION. MM				
	1/8"	1/4"	3/8"	1/2"	3/4"	1"		PRESSURE [BAR]							CONN.	H	H1	D	HEX
MODEL NO.	BSP	BSP	BSP	BSP	BSP	BSP	0.5	1.0	2.0	3.0	5.0	7.0	10.0						
DA14.100	●						1.2	0.50	0.71	1.00	1.22	1.58	1.87	2.24	1/8"	18	6.5	10	11
DA14.150	●						1.5	0.75	1.06	1.50	1.84	2.37	2.81	3.35	Weight (Metals) = 9 gms. Approx				
DA14.175	●						1.6	0.87	1.24	1.75	2.14	2.77	3.27	3.91	1/4"	22	10	13	14
DA14.200	●						1.7	1.00	1.41	2.00	2.45	3.16	3.74	4.47	Weight (Metals) = 17 gms. Approx				
DA14.250	●						1.9	1.25	1.77	2.50	3.06	3.95	4.68	5.59	3/8"	25	10	16	17
DA14.300	●						2.0	1.50	2.12	3.00	3.67	4.74	5.61	6.71	Weight (Metals) = 30 gms. Approx				
DA14.350	●	●					2.2	1.75	2.47	3.50	4.29	5.53	6.55	7.83	1/2"	32	13.2	21	22
DA14.400		●	●				2.4	2.00	2.83	4.00	4.90	6.32	7.48	8.94	Weight (Metals) = 66 gms. Approx				
DA14.475		●	●				2.6	2.37	3.36	4.75	5.82	7.51	8.89	10.62	3/4"	42	15	32	27
DA14.650		●	●				3.1	3.25	4.60	6.50	7.96	10.28	12.16	14.53	Weight (Metals) = 155 gms. Approx				
DA14.800			●				3.4	4.00	5.66	8.00	9.80	12.65	14.97	17.89	1"	56	17	39	36
DA24.100			●				3.8	5.00	7.07	10.00	12.25	15.81	18.71	22.36	Weight (Metals) = 367 gms. Approx				
DA24.125				●			4.2	6.25	8.84	12.50	15.31	19.76	23.39	27.95					
DA24.160				●			4.8	8.00	11.31	16.00	19.60	25.30	29.93	35.78					
DA24.180				●			5.2	9.00	12.73	18.00	22.05	28.46	33.67	40.25					
DA24.200					●		5.4	10.00	14.14	20.00	24.49	31.62	37.42	44.72					
DA24.225					●		5.7	11.25	15.91	22.50	27.56	35.58	42.09	50.31					
DA24.250					●		6.0	12.50	17.68	25.00	30.62	39.53	46.77	55.90					
DA24.320						●	6.8	16.00	22.63	32.00	39.19	50.60	59.87	71.55					
DA24.400						●	7.3	20.00	28.28	40.00	48.99	63.25	74.83	89.44					
DA24.520						●	8.3	26.00	36.77	52.00	63.69	82.22	97.28	116.28					

End Connection : X – BSP, Y - BSPT, Z – NPT Available.

DA Series Full Cone Spray Nozzles

DA

(Male)

90° SPRAY ANGLE	CONNECTION END						ORIFICE SIZE (mm)	FLOW CAPACITY IN LPM AT DIFFERENT PRESSURE						G/A DIMENSION. MM					
	1/8"	1/4"	3/8"	1/2"	3/4"	1"		PRESSURE [BAR]						CONN.	H	H1	D	HEX	
MODEL NO.	BSP	BSP	BSP	BSP	BSP	BSP	0.5	1.0	2.0	3.0	5.0	7.0	10.0	1/8"	18	6.5	10	11	
DA16.100	●						1.2	0.50	0.71	1.00	1.22	1.58	1.87	2.24	1/8"	18	6.5	10	11
DA16.150	●						1.4	0.75	1.06	1.50	1.84	2.37	2.81	3.35	Weight (Metals) = 9 gms. Approx				
DA16.175	●						1.5	0.87	1.24	1.75	2.14	2.77	3.27	3.91	1/4"	22	10	13	14
DA16.200	●						1.6	1.00	1.41	2.00	2.45	3.16	3.74	4.47	Weight (Metals) = 17 gms. Approx				
DA16.250	●						1.8	1.25	1.77	2.50	3.06	3.95	4.68	5.59	3/8"	25	10	16	17
DA16.300	●						2.0	1.50	2.12	3.00	3.67	4.74	5.61	6.71	Weight (Metals) = 30 gms. Approx				
DA16.350	●	●	●				2.2	1.75	2.47	3.50	4.29	5.53	6.55	7.83	1/2"	32	13.2	21	22
DA16.400	●	●	●				2.3	2.00	2.83	4.00	4.90	6.32	7.48	8.94	Weight (Metals) = 66 gms. Approx				
DA16.475	●	●	●				2.5	2.37	3.36	4.75	5.82	7.51	8.89	10.62	3/4"	42	15	32	27
DA16.650	●	●	●				2.9	3.25	4.60	6.50	7.96	10.28	12.16	14.53	Weight (Metals) = 155 gms. Approx				
DA16.800	●	●	●				3.3	4.00	5.66	8.00	9.80	12.65	14.97	17.89	1"	56	17	39	36
DA26.100			●				3.6	5.00	7.07	10.00	12.25	15.81	18.71	22.36	Weight (Metals) = 367 gms. Approx				
DA26.125			●				4.1	6.25	8.84	12.50	15.31	19.76	23.39	27.95					
DA26.160			●	●			4.6	8.00	11.31	16.00	19.60	25.30	29.93	35.78					
DA26.180				●			5.9	9.00	12.73	18.00	22.05	28.46	33.67	40.25					
DA26.200				●			5.2	10.00	14.14	20.00	24.49	31.62	37.42	44.72					
DA26.225				●			5.5	11.25	15.91	22.50	27.56	35.58	42.09	50.31					
DA26.250				●	●		5.8	12.50	17.68	25.00	30.62	39.53	46.77	55.90					
DA26.320				●	●		6.5	16.00	22.63	32.00	39.19	50.60	59.87	71.55					
DA26.400					●		7.3	20.00	28.28	40.00	48.99	63.25	74.83	89.44					
DA26.520					●	●	8.3	26.00	36.77	52.00	63.69	82.22	97.28	116.28					
DA26.650					●		9.3	32.50	45.96	65.00	79.61	102.77	121.60	145.34					
DA26.720					●		9.8	36.00	50.91	72.00	88.18	113.8	134.7	161.0					

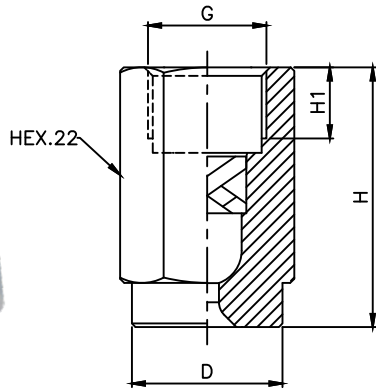
120° SPRAY ANGLE	CONNECTION END						ORIFICE SIZE (mm)	FLOW CAPACITY IN LPM AT DIFFERENT PRESSURE						G/A DIMENSION. MM					
	1/8"	1/4"	3/8"	1/2"	3/4"	1"		PRESSURE [BAR]						CONN.	H	H1	D	HEX	
MODEL NO.	BSP	BSP	BSP	BSP	BSP	BSP	0.5	1.0	2.0	3.0	5.0	7.0	10.0	1/8"	18	6.5	10	11	
DA18.100	●						1.2	0.50	0.71	1.00	1.22	1.58	1.87	2.24	1/8"	18	6.5	10	11
DA18.150	●						1.5	0.75	1.06	1.50	1.84	2.37	2.81	3.35	Weight (Metals) = 9 gms. Approx				
DA18.175	●						1.6	0.87	1.24	1.75	2.14	2.77	3.27	3.91	1/4"	22	10	13	14
DA18.200	●						1.7	1.00	1.41	2.00	2.45	3.16	3.74	4.47	Weight (Metals) = 17 gms. Approx				
DA18.250	●						1.9	1.25	1.77	2.50	3.06	3.95	4.68	5.59	3/8"	25	10	16	17
DA18.300	●						2.0	1.50	2.12	3.00	3.67	4.74	5.61	6.71	Weight (Metals) = 30 gms. Approx				
DA18.350	●						2.3	1.75	2.47	3.50	4.29	5.53	6.55	7.83	1/2"	32	13.2	21	22
DA18.400	●	●	●				2.5	2.00	2.83	4.00	4.90	6.32	7.48	8.94	Weight (Metals) = 66 gms. Approx				
DA18.475	●	●	●				2.7	2.37	3.36	4.75	5.82	7.51	8.89	10.62	3/4"	42	15	32	27
DA18.650	●	●	●				3.1	3.25	4.60	6.50	7.96	10.28	12.16	14.53	Weight (Metals) = 155 gms. Approx				
DA18.800	●	●	●				3.5	4.00	5.66	8.00	9.80	12.65	14.97	17.89	1"	56	17	39	36
DA28.100			●				3.9	5.00	7.07	10.00	12.25	15.81	18.71	22.36	Weight (Metals) = 367 gms. Approx				
DA28.125			●				4.3	6.25	8.84	12.50	15.31	19.76	23.39	27.95					
DA28.160			●	●			4.9	8.00	11.31	16.00	19.60	25.30	29.93	35.78					
DA28.180				●			5.2	9.00	12.73	18.00	22.05	28.46	33.67	40.25					
DA28.200				●			5.5	10.00	14.14	20.00	24.49	31.62	37.42	44.72					
DA28.225				●			5.8	11.25	15.91	22.50	27.56	35.58	42.09	50.31					
DA28.250				●	●		6.1	12.50	17.68	25.00	30.62	39.53	46.77	55.90					
DA28.320				●	●		6.9	16.00	22.63	32.00	39.19	50.60	59.87	71.55					
DA28.400					●		7.7	20.00	28.28	40.00	48.99	63.25	74.83	89.44					
DA28.520					●	●	8.8	26.00	36.77	52.00	63.69	82.22	97.28	116.28					
DA28.650					●		9.9	32.50	45.96	65.00	79.61	102.77	121.60	145.34					
DA28.720					●		10.4	36.00	50.91	72.00	88.18	113.8	134.7	161.0					

End Connection : X – BSP, Y - BSPT, Z – NPT Available.

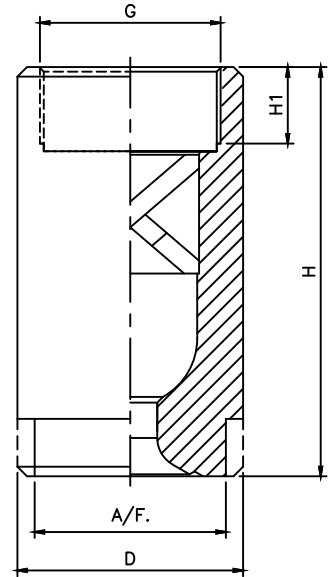
DB Series Full Cone Spray Nozzles

DB

(Female)



Design for 1/8", 1/4", 3/8" & 1/2"



Design for 3/4" & 2"

MODEL NO.	CONNECTION END										FLOW CAPACITY IN LPM AT DIFFERENT PRESSURE						G/A DIMENSION. MM														
	1/8"	1/4"	3/8"	1/2"	3/4"	1"	1 1/4"	1 1/2"	2"	ORIFICE SIZE (mm)																					
	15°	30°	BSP	BSP	BSP	BSP	BSP	BSP	BSP	BSP	ORIFICE SIZE (mm)	PRESSURE [BAR]						CONN.	H	H1	D	HEX									
DB11.100	DB12.100	●									1.2	0.50	0.71	1.00	1.22	1.58	1.87	2.24	0.5	1.0	2.0	3.0	5.0	7.0	10.0	1/8"	26.5	6.5	13.2	14	
DB11.150	DB12.150	●									1.5	0.75	1.06	1.50	1.84	2.37	2.81	3.35									Weight (Metals) = XX gms. Approx				
DB11.175	DB12.175	●									1.6	0.87	1.24	1.75	2.14	2.77	3.27	3.91								1/4"	34	10	15.2	16	
DB11.200	DB12.200	●									1.7	1.00	1.41	2.00	2.45	3.16	3.74	4.47									Weight (Metals) = 38 gms. Approx				
DB11.250	DB12.250	●									1.9	1.25	1.77	2.50	3.06	3.95	4.68	5.59								3/8"	36.5	10	21.2	22	
DB11.300	DB12.300	●									2.0	1.50	2.12	3.00	3.67	4.74	5.61	6.71									Weight (Metals) = 90 gms. Approx				
DB11.350	DB12.350	●									2.3	1.75	2.47	3.50	4.29	5.53	6.55	7.83								1/2"	48.5	14	26.2	27	
DB11.400	DB12.400	●									2.5	2.00	2.83	4.00	4.90	6.32	7.48	8.94									Weight (Metals) = 176 gms. Approx				
DB11.475	DB12.475	●	●								2.7	2.37	3.36	4.75	5.82	7.51	8.89	10.62								3/4"	58	14	31.5	27	
DB11.650	DB12.650		●								3.1	3.25	4.60	6.50	7.96	10.28	12.16	14.53									Weight (Metals) = 230 gms. Approx				
DB11.800	DB12.800		●								3.5	4.00	5.66	8.00	9.80	12.65	14.97	17.89								1"	76	18	39.5	36	
DB21.100	DB22.100		●	●							3.9	5.00	7.07	10.00	12.25	15.81	18.71	22.36									Weight (Metals) = 470 gms. Approx				
DB21.125	DB22.125			●	●						4.3	6.25	8.84	12.50	15.31	19.76	23.39	27.95									1 1/4"	96	20	49	41
DB21.160	DB22.160			●	●						4.9	8.00	11.31	16.00	19.60	25.30	29.93	35.78									Weight (Metals) = 678 gms. Approx				
DB21.180	DB22.180				●	●					5.2	9.00	12.73	18.00	22.05	28.46	33.67	40.25									1 1/2"	107	20	59	50
DB21.200	DB22.200				●	●					5.5	10.00	14.14	20.00	24.49	31.62	37.42	44.72									Weight (Metals) = 1176 gms. Approx				
DB21.225	DB22.225				●	●					5.8	11.25	15.91	22.50	27.56	35.58	42.09	50.31									2"	130	22	68	60
DB21.250	DB22.250					●	●				6.1	12.50	17.68	25.00	30.62	39.53	46.77	55.90									Weight (Metals) = 2410 gms. Approx				
DB21.320	DB22.320						●	●			6.9	16.00	22.63	32.00	39.19	50.60	59.87	71.55													
DB21.400	DB22.400							●	●		7.7	20.00	28.28	40.00	48.99	63.25	74.83	89.44													
DB21.520	DB22.520								●	●	8.8	26.00	36.77	52.00	63.69	82.22	97.28	116.28													
DB21.650	DB22.650									●	9.9	32.50	45.96	65.00	79.61	102.77	121.60	145.34													
DB21.720	DB22.720										10.4	36.00	50.91	72.00	88.18	113.8	134.7	161.00													
DB21.800	DB22.800										11.5	40.00	56.57	80.00	97.98	126.49	149.67	178.89													
DB31.100	DB32.100										12.9	50.00	70.71	100.00	122.47	158.11	187.08	223.61													
DB31.118	DB32.118										14.0	59.00	83.44	118.00	144.52	186.57	220.76	263.86													
DB31.130	DB32.130										14.7	65.00	91.92	130.00	159.22	205.55	243.21	290.69													
DB31.160	DB32.160										16.3	80.00	113.14	160.00	195.96	252.98	299.33	357.77													
DB31.200	DB32.200										18.2	100	141.42	200.00	244.95	316.23	374.17	447.21													
DB31.227	DB32.227										19.4	113.5	160.51	227.00	278.02	358.92	424.68	507.59													
DB31.250	DB32.250										20.4	125	176.78	250.00	306.19	395.19	467.71	559.02													
DB31.337	DB32.337										23.7	168.5	238.29	337.00	412.74	532.84	630.47	753.55													

End Connection : X – BSP, Y – BSPT, Z – NPT Available.

DB Series Full Cone Spray Nozzles

(Female)

45° SPRAY ANGLE	CONNECTION END						ORIFICE SIZE (mm)	FLOW CAPACITY IN LPM AT DIFFERENT PRESSURE							G/A DIMENSION. MM				
	1/8"	1/4"	3/8"	1/2"	3/4"	1"		PRESSURE [BAR]							CONN.	H	H1	D	HEX
MODEL NO.	BSP	BSP	BSP	BSP	BSP	BSP	0.5	1.0	2.0	3.0	5.0	7.0	10.0						
DB13.100	●						1.2	0.50	0.71	1.00	1.22	1.58	1.87	2.24	1/8"	26.5	6.5	13.2	14
DB13.150	●						1.5	0.75	1.06	1.50	1.84	2.37	2.81	3.35	Weight (Metals) = xx gms. Approx				
DB13.175	●						1.6	0.87	1.24	1.75	2.14	2.77	3.27	3.91	1/4"	34	10	15.2	16
DB13.200	●						1.7	1.00	1.41	2.00	2.45	3.16	3.74	4.47	Weight (Metals) = 38 gms. Approx				
DB13.250	●	●					1.9	1.25	1.77	2.50	3.06	3.95	4.68	5.59	3/8"	36.5	10	21.2	22
DB13.300		●					2.0	1.50	2.12	3.00	3.67	4.74	5.61	6.71	Weight (Metals) = 90 gms. Approx				
DB13.350		●	●				2.2	1.75	2.47	3.50	4.29	5.53	6.55	7.83	1/2"	48.5	14	26.2	27
DB13.400		●	●				2.4	2.00	2.83	4.00	4.90	6.32	7.48	8.94	Weight (Metals) = 176 gms. Approx				
DB13.475		●	●				2.6	2.37	3.36	4.75	5.82	7.51	8.89	10.62	3/4"	58	14	31.5	27
DB13.650			●	●			3.1	3.25	4.60	6.50	7.96	10.28	12.16	14.53	Weight (Metals) = 230 gms. Approx				
DB13.800				●			3.4	4.00	5.66	8.00	9.80	12.65	14.97	17.89	1"	76	18	39.5	36
DB23.100				●			3.8	5.00	7.07	10.00	12.25	15.81	18.71	22.36	Weight (Metals) = 470 gms. Approx				
DB23.125				●	●		4.2	6.25	8.84	12.50	15.31	19.76	23.39	27.95					
DB23.160				●	●		4.8	8.00	11.31	16.00	19.60	25.30	29.93	35.78					
DB23.180				●	●		5.2	9.00	12.73	18.00	22.05	28.46	33.67	40.25					
DB23.200				●	●		5.4	10.00	14.14	20.00	24.49	31.62	37.42	44.72					
DB23.225					●		5.7	11.25	15.91	22.50	27.56	35.58	42.09	50.31					
DB23.250					●		6.0	12.50	17.68	25.00	30.62	39.53	46.77	55.90					
DB23.320					●		6.8	16.00	22.63	32.00	39.19	50.60	59.87	71.55					

60° SPRAY ANGLE	CONNECTION END						ORIFICE SIZE (mm)	FLOW CAPACITY IN LPM AT DIFFERENT PRESSURE							G/A DIMENSION. MM				
	1/8"	1/4"	3/8"	1/2"	3/4"	1"		PRESSURE [BAR]							CONN.	H	H1	D	HEX
MODEL NO.	BSP	BSP	BSP	BSP	BSP	BSP	0.5	1.0	2.0	3.0	5.0	7.0	10.0						
DB14.100	●						1.1	0.50	0.71	1.00	1.22	1.58	1.87	2.24	1/8"	26.5	6.5	13.2	14
DB14.150	●						1.4	0.75	1.06	1.50	1.84	2.37	2.81	3.35	Weight (Metals) = xx gms. Approx				
DB14.175	●						1.5	0.87	1.24	1.75	2.14	2.77	3.27	3.91	1/4"	34	10	15.2	16
DB14.200	●						1.6	1.00	1.41	2.00	2.45	3.16	3.74	4.47	Weight (Metals) = 38 gms. Approx				
DB14.250	●						1.8	1.25	1.77	2.50	3.06	3.95	4.68	5.59	3/8"	36.5	10	21.2	22
DB14.300	●						2.0	1.50	2.12	3.00	3.67	4.74	5.61	6.71	Weight (Metals) = 90 gms. Approx				
DB14.350	●	●					2.1	1.75	2.47	3.50	4.29	5.53	6.55	7.83	1/2"	48.5	14	26.2	27
DB14.400		●	●				2.3	2.00	2.83	4.00	4.90	6.32	7.48	8.94	Weight (Metals) = 176 gms. Approx				
DB14.475		●	●				2.5	2.37	3.36	4.75	5.82	7.51	8.89	10.62	3/4"	58	14	31.5	27
DB14.650		●	●				2.9	3.25	4.60	6.50	7.96	10.28	12.16	14.53	Weight (Metals) = 230 gms. Approx				
DB14.800			●				3.25	4.00	5.66	8.00	9.80	12.65	14.97	17.89	1"	76	18	39.5	36
DB24.100			●				3.6	5.00	7.07	10.00	12.25	15.81	18.71	22.36	Weight (Metals) = 470 gms. Approx				
DB24.125				●			4.1	6.25	8.84	12.50	15.31	19.76	23.39	27.95					
DB24.160				●			4.6	8.00	11.31	16.00	19.60	25.30	29.93	35.78					
DB24.180				●			4.9	9.00	12.73	18.00	22.05	28.46	33.67	40.25					
DB24.200					●		5.1	10.00	14.14	20.00	24.49	31.62	37.42	44.72					
DB24.225					●		5.5	11.25	15.91	22.50	27.56	35.58	42.09	50.31					
DB24.250					●		5.8	12.50	17.68	25.00	30.62	39.53	46.77	55.90					
DB24.320					●		6.5	16.00	22.63	32.00	39.19	50.60	59.87	71.55					
DB24.400					●		7.3	20.00	28.28	40.00	48.99	63.25	74.83	89.44					
DB24.520					●		8.3	26.00	36.77	52.00	63.69	82.22	97.28	116.28					

End Connection : X – BSP, Y - BSPT, Z – NPT Available.

DB Series Full Cone Spray Nozzles

(Female)

90° SPRAY ANGLE	CONNECTION END						ORIFICE SIZE (mm)	FLOW CAPACITY IN LPM AT DIFFERENT PRESSURE							G/A DIMENSION. MM				
	1/8"	1/4"	3/8"	1/2"	3/4"	1"		PRESSURE [BAR]							CONN.	H	H1	D	HEX
MODEL NO.	BSP	BSP	BSP	BSP	BSP	BSP	0.5	1.0	2.0	3.0	5.0	7.0	10.0						
DB16.100	●						1.2	0.50	0.71	1.00	1.22	1.58	1.87	2.24	1/8"	26.5	6.5	13.2	14
DB16.150	●						1.4	0.75	1.06	1.50	1.84	2.37	2.81	3.35	Weight (Metals) = xx gms. Approx				
DB16.175	●						1.5	0.87	1.24	1.75	2.14	2.77	3.27	3.91	1/4"	34	10	15.2	16
DB16.200	●						1.6	1.00	1.41	2.00	2.45	3.16	3.74	4.47	Weight (Metals) = 38 gms. Approx				
DB16.250	●						1.8	1.25	1.77	2.50	3.06	3.95	4.68	5.59	3/8"	36.5	10	21.2	22
DB16.300	●						2.0	1.50	2.12	3.00	3.67	4.74	5.61	6.71	Weight (Metals) = 90 gms. Approx				
DB16.350	●	●	●				2.2	1.75	2.47	3.50	4.29	5.53	6.55	7.83	1/2"	48.5	14	26.2	27
DB16.400	●	●	●				2.3	2.00	2.83	4.00	4.90	6.32	7.48	8.94	Weight (Metals) = 176 gms. Approx				
DB16.475	●	●	●				2.5	2.37	3.36	4.75	5.82	7.51	8.89	10.62	3/4"	58	14	31.5	27
DB16.650	●	●	●				2.9	3.25	4.60	6.50	7.96	10.28	12.16	14.53	Weight (Metals) = 230 gms. Approx				
DB16.800	●	●	●				3.3	4.00	5.66	8.00	9.80	12.65	14.97	17.89	1"	76	18	39.5	36
DB26.100			●				3.6	5.00	7.07	10.00	12.25	15.81	18.71	22.36	Weight (Metals) = 470 gms. Approx				
DB26.125			●				4.1	6.25	8.84	12.50	15.31	19.76	23.39	27.95					
DB26.160			●	●			4.6	8.00	11.31	16.00	19.60	25.30	29.93	35.78					
DB26.180				●			4.9	9.00	12.73	18.00	22.05	28.46	33.67	40.25					
DB26.200				●			5.2	10.00	14.14	20.00	24.49	31.62	37.42	44.72					
DB26.225				●			5.5	11.25	15.91	22.50	27.56	35.58	42.09	50.31					
DB26.250				●	●		5.8	12.50	17.68	25.00	30.62	39.53	46.77	55.90					
DB26.320				●	●		6.5	16.00	22.63	32.00	39.19	50.60	59.87	71.55					
DB26.400					●		7.3	20.00	28.28	40.00	48.99	63.25	74.83	89.44					
DB26.520					●	●	8.3	26.00	36.77	52.00	63.69	82.22	97.28	116.28					
DB26.650					●	●	9.3	32.50	45.96	65.00	79.61	102.77	121.60	145.34					
DB26.720					●	●	9.8	36.00	50.91	72.00	88.18	113.8	134.7	161.0					

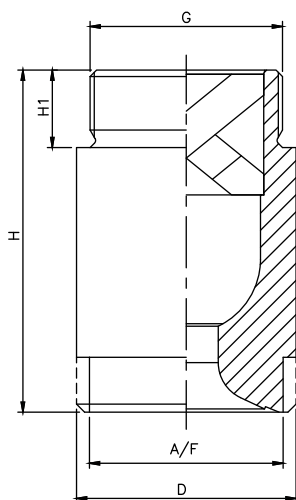
120° SPRAY ANGLE	CONNECTION END						ORIFICE SIZE (mm)	FLOW CAPACITY IN LPM AT DIFFERENT PRESSURE							G/A DIMENSION. MM				
	1/8"	1/4"	3/8"	1/2"	3/4"	1"		PRESSURE [BAR]							CONN.	H	H1	D	HEX
MODEL NO.	BSP	BSP	BSP	BSP	BSP	BSP	0.5	1.0	2.0	3.0	5.0	7.0	10.0						
DB18.100	●						1.2	0.50	0.71	1.00	1.22	1.58	1.87	2.24	1/8"	26.5	6.5	13.2	14
DB18.150	●						1.5	0.75	1.06	1.50	1.84	2.37	2.81	3.35	Weight (Metals) = xx gms. Approx				
DB18.175	●						1.6	0.87	1.24	1.75	2.14	2.77	3.27	3.91	1/4"	34	10	15.2	16
DB18.200	●						1.7	1.00	1.41	2.00	2.45	3.16	3.74	4.47	Weight (Metals) = 38 gms. Approx				
DB18.250	●						1.9	1.25	1.77	2.50	3.06	3.95	4.68	5.59	3/8"	36.5	10	21.2	22
DB18.300	●						2.0	1.50	2.12	3.00	3.67	4.74	5.61	6.71	Weight (Metals) = 90 gms. Approx				
DB18.350	●						2.3	1.75	2.47	3.50	4.29	5.53	6.55	7.83	1/2"	48.5	14	26.2	27
DB18.400	●	●	●				2.5	2.00	2.83	4.00	4.90	6.32	7.48	8.94	Weight (Metals) = 176 gms. Approx				
DB18.475	●	●	●				2.7	2.37	3.36	4.75	5.82	7.51	8.89	10.62	3/4"	58	14	31.5	27
DB18.650	●	●	●				3.1	3.25	4.60	6.50	7.96	10.28	12.16	14.53	Weight (Metals) = 230 gms. Approx				
DB18.800	●	●	●				3.5	4.00	5.66	8.00	9.80	12.65	14.97	17.89	1"	76	18	39.5	36
DB28.100			●				3.9	5.00	7.07	10.00	12.25	15.81	18.71	22.36	Weight (Metals) = 470 gms. Approx				
DB28.125			●				4.3	6.25	8.84	12.50	15.31	19.76	23.39	27.95					
DB28.160			●	●			4.9	8.00	11.31	16.00	19.60	25.30	29.93	35.78					
DB28.180				●			5.2	9.00	12.73	18.00	22.05	28.46	33.67	40.25					
DB28.200				●			5.5	10.00	14.14	20.00	24.49	31.62	37.42	44.72					
DB28.225				●			5.8	11.25	15.91	22.50	27.56	35.58	42.09	50.31					
DB28.250				●	●		6.1	12.50	17.68	25.00	30.62	39.53	46.77	55.90					
DB28.320				●	●		6.9	16.00	22.63	32.00	39.19	50.60	59.87	71.55					
DB28.400					●		7.7	20.00	28.28	40.00	48.99	63.25	74.83	89.44					
DB28.520					●	●	8.8	26.00	36.77	52.00	63.69	82.22	97.28	116.28					
DB28.650					●	●	9.9	32.50	45.96	65.00	79.61	102.77	121.60	145.34					
DB28.720					●	●	10.4	36.00	50.91	72.00	88.18	113.8	134.7	161.0					

End Connection : X – BSP, Y – BSPT, Z – NPT Available.

DA Series Full Cone Spray Nozzles

DA

(Axial Flow Male)



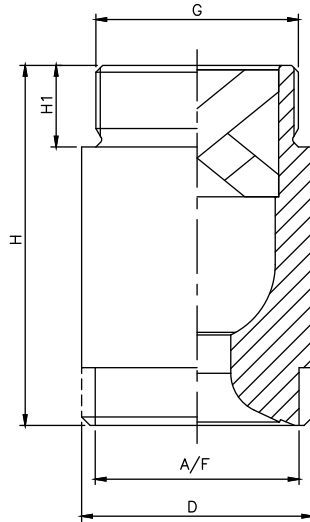
The larger spray nozzles in the D series are widely used in the industry, for a wide variety of applications. They maintain the simple design of the smaller nozzles, with the inherent resistance to clogging due to design of the X-vane, and are often manufactured out high quality alloys and special plastic materials.

Design for 1-1/4", 1-1/2", 2"

MODEL NO.	CONNECTION END			ORIFICE SIZE (mm)	FLOW CAPACITY IN LPM AT DIFFERENT PRESSURE							G/A DIMENSION. MM				
	1 1/4"	1 1/2"	2"		PRESSURE [BAR]							CONN.	H	H1	D	A/F
60° SPRAY ANGLE	BSP BSPT NPT	BSP BSPT NPT	BSP BSPT NPT		0.5	1.0	2.0	3.0	5.0	7.0	10.0					
DA24.650	●			9.0	32.5	45.96	65.00	79.61	102.77	121.60	145.34	1 1/4"	74	19	49	41
DA24.800	●			10.0	40.00	56.57	80.00	97.98	126.49	149.67	178.89	Weight (Metals) = XXX gms. Approx				
DA34.100	●			11.20	50.00	70.71	100.0	122.47	158.11	187.08	223.61	1 1/2"	85	22	59	50
DA34.118		●		12.2	59.00	83.44	118.0	144.52	186.57	220.76	263.86	Weight (Metals) = XXX gms. Approx				
DA34.130		●		12.8	65.00	91.92	130.0	159.22	205.55	243.21	290.69	2"	106	24	68	60
DA34.160		●		14.2	80.00	113.14	160.0	195.96	252.98	299.33	357.77	Weight (Metals) = XXX gms. Approx				
DA34.200			●	15.8	100	141.42	200.0	244.95	316.23	374.17	447.21					
DA34.227			●	16.9	113.5	160.51	227.0	278.02	358.92	424.68	507.59					
DA34.250			●	17.7	125	176.78	250.0	306.19	395.19	467.71	559.02					
DA34.300			●	19.1	150	212.13	300.0	367.42	474.34	561.25	670.82					
DA34.337			●	20.6	168.5	238.29	337.0	412.74	532.84	630.47	753.55					

MODEL NO.	CONNECTION END			ORIFICE SIZE (mm)	FLOW CAPACITY IN LPM AT DIFFERENT PRESSURE							G/A DIMENSION. MM				
	1 1/4"	1 1/2"	2"		PRESSURE [BAR]							CONN.	H	H1	D	A/F
90° SPRAY ANGLE	BSP BSPT NPT	BSP BSPT NPT	BSP BSPT NPT		0.5	1.0	2.0	3.0	5.0	7.0	10.0					
DA26.650	●			9.7	32.5	45.96	65.00	79.61	102.77	121.60	145.34	1 1/4"		19	49	41
DA26.800	●			10.7	40.00	56.57	80.00	97.98	126.49	149.67	178.89	Weight (Metals) = 525.0 gms. Approx				
DA36.100	●			12.0	50.00	70.71	100.0	122.47	158.11	187.08	223.61	1 1/2"	85	22	59	50
DA36.118		●		13.0	59.00	83.44	118.0	144.52	186.57	220.76	263.86	Weight (Metals) = 915.0 gms. Approx				
DA36.130		●		13.7	65.00	91.92	130.0	159.22	205.55	243.21	290.69	2"	106	24	68	60
DA36.160		●		15.20	80.00	113.14	160.0	195.96	252.98	299.33	357.77	Weight (Metals) = 1535.0 gms. Approx				
DA36.200			●	17.0	100	141.42	200.0	244.95	316.23	374.17	447.21					
DA36.227			●	18.1	113.5	160.51	227.0	278.02	358.92	424.68	507.59					
DA36.250			●	19.0	125	176.78	250.0	306.19	395.19	467.71	559.02					
DA36.300			●	20.5	150	212.13	300.0	367.42	474.34	561.25	670.82					
DA36.337			●	22.0	168.5	238.29	337.0	412.74	532.84	630.47	753.55					

DA



- Application** : Surface spraying, Washing & Cooling of flue gasses to remove fly ash, Cooling condenser, Scrubbing, Foam breaking.
- Flow Rate** : 65 LPM to 1250 LPM
- Pressure** : 2.0 Kg/cm² or specified
- Spray Angle** : 60° to 120°
- End Connection** : 1 1/4" to 4" BSPT / NPT or BSPP
- M.O.C.** : S.S. 316, 304, Brass, PVC, PVDF, PP, Teflon®

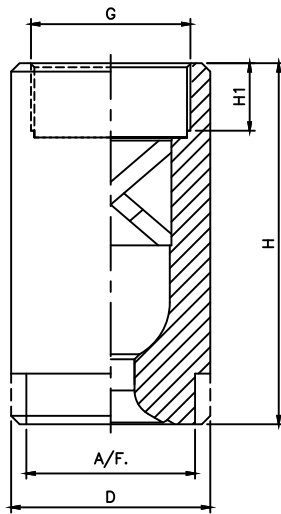
The larger spray nozzles in the DA Series are widely used in the industry, for a wide variety of applications. They maintain the simple design of the smaller nozzles, with the inherent resistance to clogging due to design of the X-vane and are often manufactured by any type of machinable material like SS304, SS316, PP/PVC etc.

MODEL NO.	CONNECTION END			ORIFICE SIZE (mm)	FLOW CAPACITY IN LPM AT DIFFERENT PRESSURE							G/A DIMENSION. MM				
	1 1/4"	1 1/2"	2"		PRESSURE [BAR]											
120° SPRAY ANGLE	BSP BSPT NPT	BSP BSPT NPT	BSP BSPT NPT		0.5	1.0	2.0	3.0	5.0	7.0	10.0	CONN.	H	H1	D	A/F
DA28.800	●			11.4	40.00	56.57	80.00	97.98	126.49	149.67	178.89	1 1/4"	74	19	49	41
DA38.100	●			12.7	50.00	70.71	100.0	122.47	158.11	187.08	223.61	Weight (Metals) = XX gms. Approx				
DA38.118	●	●		13.8	59.00	83.44	118.0	144.52	186.57	220.76	263.86	1 1/2"	85	22	59	50
DA38.130	●	●		14.5	65.00	91.92	130.0	159.22	205.55	243.21	290.69	Weight (Metals) = XX gms. Approx				
DA38.160		●		16.1	80.00	113.14	160.0	195.96	252.98	299.33	357.77	2"	106	24	68	60
DA38.200			●	18.0	100.0	141.42	200.0	244.95	316.23	374.17	447.21	Weight (Metals) = XX gms. Approx				
DA38.227			●	19.1	113.5	160.51	227.0	278.02	358.92	424.68	507.59					
DA38.250			●	20.1	125.0	176.78	250.0	306.19	395.19	467.71	559.02					
DA38.300			●	21.5	150	212.13	300.0	367.42	474.34	561.25	670.82					
DA38.337			●	23.3	168.5	238.29	337.0	412.74	532.84	630.47	753.55					

DB Series Full Cone Spray Nozzles

DB

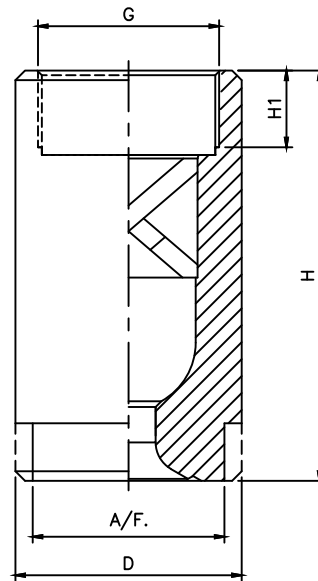
(Axial Flow Female)



The larger spray nozzles in the D series are widely used in the industry, for a wide variety of applications. They maintain the simple design of the smaller nozzles, with the inherent resistance to clogging due to design of the X-vane, and are often manufactured out high quality alloys and special plastic materials.

MODEL NO.	CONNECTION END			ORIFICE SIZE (mm)	FLOW CAPACITY IN LPM AT DIFFERENT PRESSURE							G/A DIMENSION. MM				
	1 1/4"	1 1/2"	2"		PRESSURE [BAR]							CONN.	H	H1	D	A/F
60° SPRAY ANGLE	BSP BSPT NPT	BSP BSPT NPT	BSP BSPT NPT		0.5	1.0	2.0	3.0	5.0	7.0	10.0	1 1/4"	H	H1	D	A/F
DB24.650	●			9.0	32.5	45.96	65.00	79.61	102.77	121.60	145.34	1 1/4"	96	20	49	41
DB24.800	●			10.0	40.00	56.57	80.00	97.98	126.49	149.67	178.89	Weight (Metals) = XX gms. Approx				
DB34.100	●			11.20	50.00	70.71	100.0	122.47	158.11	187.08	223.61	1 1/2"	107	20	59	50
DB34.118		●		12.2	59.00	83.44	118.0	144.52	186.57	220.76	263.86	Weight (Metals) = XX gms. Approx				
DB34.130		●		12.8	65.00	91.92	130.0	159.22	205.55	243.21	290.69	2"	130	22	68	60
DB34.160		●		14.2	80.00	113.14	160.0	195.96	252.98	299.33	357.77	Weight (Metals) = XX gms. Approx				
DB34.200			●	15.8	100	141.42	200.0	244.95	316.23	374.17	447.21					
DB34.227			●	16.9	113.5	160.51	227.0	278.02	358.92	424.68	507.59					
DB34.250			●	17.7	125	176.78	250.0	306.19	395.19	467.71	559.02					
DB34.300			●	19.1	150	212.13	300.0	367.42	474.34	561.25	670.82					
DB34.337			●	20.6	168.5	238.29	337.0	412.74	532.84	630.47	753.55					

MODEL NO.	CONNECTION END			ORIFICE SIZE (mm)	FLOW CAPACITY IN LPM AT DIFFERENT PRESSURE							G/A DIMENSION. MM				
	1 1/4"	1 1/2"	2"		PRESSURE [BAR]							CONN.	H	H1	D	A/F
90° SPRAY ANGLE	BSP BSPT NPT	BSP BSPT NPT	BSP BSPT NPT		0.5	1.0	2.0	3.0	5.0	7.0	10.0	CONN.	H	H1	D	A/F
DB26.650	●			9.7	32.5	45.96	65.00	79.61	102.77	121.60	145.34	1 1/4"	96	20	49	41
DB26.800	●			10.7	40.00	56.57	80.00	97.98	126.49	149.67	178.89	Weight (Metals) = 525.0 gms. Approx				
DB36.100	●			12.0	50.00	70.71	100.0	122.47	158.11	187.08	223.61	1 1/2"	107	20	59	50
DB36.118		●		13.0	59.00	83.44	118.0	144.52	186.57	220.76	263.86	Weight (Metals) = 915.0 gms. Approx				
DB36.130		●		13.7	65.00	91.92	130.0	159.22	205.55	243.21	290.69	2"	130	22	68	60
DB36.160		●		15.20	80.00	113.14	160.0	195.96	252.98	299.33	357.77	Weight (Metals) = 1535.0 gms. Approx				
DB36.200			●	17.0	100	141.42	200.0	244.95	316.23	374.17	447.21					
DB36.227			●	18.1	113.5	160.51	227.0	278.02	358.92	424.68	507.59					
DB36.250			●	19.0	125	176.78	250.0	306.19	395.19	467.71	559.02					
DB36.300			●	20.5	150	212.13	300.0	367.42	474.34	561.25	670.82					
DB36.337			●	22.0	168.5	238.29	337.0	412.74	532.84	630.47	753.55					



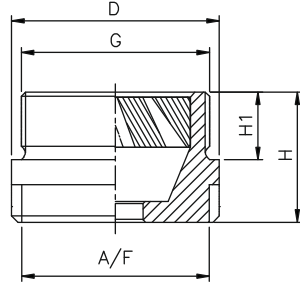
The larger spray nozzles in the DA Series are widely used in the industry, for a wide variety of applications. They maintain the simple design of the smaller nozzles, with the inherent resistance to clogging due to design of the X-vane and are often manufactured by any type of machinable material like SS304, SS316, PP/PVC etc.

MODEL NO.	CONNECTION END			ORIFICE SIZE (mm)	FLOW CAPACITY IN LPM AT DIFFERENT PRESSURE							G/A DIMENSION. MM				
	1 1/4"	1 1/2"	2"		PRESSURE [BAR]							CONN.	H	H1	D	A/F
120° SPRAY ANGLE	BSP BSPT NPT	BSP BSPT NPT	BSP BSPT NPT		0.5	1.0	2.0	3.0	5.0	7.0	10.0	1 1/4"	H	H1	D	A/F
DB28.800	●			11.4	40.00	56.57	80.00	97.98	126.49	149.67	178.89	1 1/4"	96	20	49	41
DB38.100	●			12.7	50.00	70.71	100.0	122.47	158.11	187.08	223.61	Weight (Metals) = XX gms. Approx				
DB38.118	●	●		13.8	59.00	83.44	118.0	144.52	186.57	220.76	263.86	1 1/2"	107	20	59	50
DB38.130	●	●		14.5	65.00	91.92	130.0	159.22	205.55	243.21	290.69	Weight (Metals) = XX gms. Approx				
DB38.160		●		16.1	80.00	113.14	160.0	195.96	252.98	299.33	357.77	2"	130	22	68	60
DB38.200			●	18.0	100.0	141.42	200.0	244.95	316.23	374.17	447.21	Weight (Metals) = XX gms. Approx				
DB38.227			●	19.1	113.5	160.51	227.0	278.02	358.92	424.68	507.59					
DB38.250			●	20.1	125.0	176.78	250.0	306.19	395.19	467.71	559.02					
DB38.300			●	21.5	150.0	212.13	300.0	367.42	474.34	561.25	670.82					
DB38.337			●	23.3	168.5	238.29	337.0	412.74	532.84	630.47	753.55					

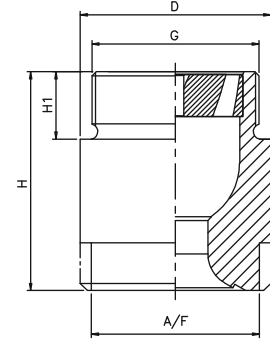
DA Series Full Cone Spray Nozzles

(Male)

DA



Spray Angle 60°/ 90°



Spray Angle 120°

60° SPRAY ANGLE	CONNECTION END				ORIFICE SIZE (mm)	FLOW CAPACITY IN LPM AT DIFFERENT PRESSURE							G/A DIMENSION. MM				
	2 1/2"	3"	3 1/2"	4"		PRESSURE [BAR]							CONN.	H	H1	D	A/F
MODEL NO.	BSP BSPT NPT	BSP BSPT NPT	BSP BSPT NPT	BSP BSPT NPT		0.5	1.0	2.0	3.0	5.0	7.0	10.0	2 1/2"	H	H1	D	A/F
DA34.400	●				25.0	200	282.84	400	489.90	632.46	748.33	894.43	2 1/2"	52	27	83	75
DA34.500	●				28.0	250	353.55	500	612.37	790.57	935.41	1118.03	Weight (Metals) = XX gms. Approx				
DA34.625		●			31.3	312.5	441.94	625	765.47	988.21	1169.27	1397.54	3"	60	30	98	85
DA34.710		●			33.3	355	502.05	710	869.57	1122.61	1328.29	1587.61	Weight (Metals) = XX gms. Approx				
DA34.800			●		35.4	400	565.69	800	979.80	1264.91	1496.66	1788.85	3 1/2"	70	32	118	105
DA44.1000			●		36.0	500	707.11	1000	1224.74	1581.14	1870.83	2236.07	Weight (Metals) = XX gms. Approx				
DA44.1250				●	42.0	625	883.88	1250	1530.93	1976.42	2338.54	2795.08	4"	90	36	128	110
													Weight (Metals) = XX gms. Approx				

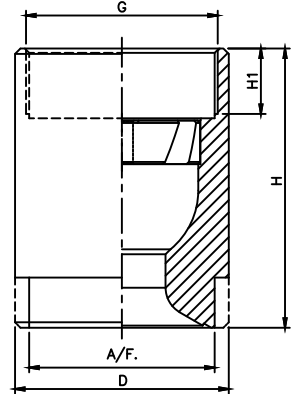
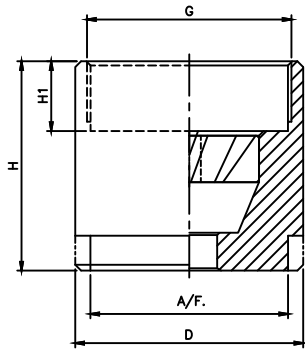
90° SPRAY ANGLE	CONNECTION END				ORIFICE SIZE (mm)	FLOW CAPACITY IN LPM AT DIFFERENT PRESSURE							G/A DIMENSION. MM				
	2 1/2"	3"	3 1/2"	4"		PRESSURE [BAR]							CONN.	H	H1	D	A/F
MODEL NO.	BSP BSPT NPT	BSP BSPT NPT	BSP BSPT NPT	BSP BSPT NPT		0.5	1.0	2.0	3.0	5.0	7.0	10.0	CONN.	H	H1	D	A/F
DA36.400	●				25.0	200	282.84	400	489.90	632.46	748.33	894.43	2 1/2"	52	27	83	75
DA36.500	●				28.0	250	353.55	500	612.37	790.57	935.41	1118.03	Weight (Metals) = 1318 gms. Approx				
DA36.625		●			31.3	312.5	441.94	625	765.47	988.21	1169.27	1397.54	3"	60	30	98	85
DA36.710		●			33.3	355	502.05	710	869.57	1122.61	1328.29	1587.61	Weight (Metals) = 1676 gms. Approx				
DA36.800			●		35.4	400	565.69	800	979.80	1264.91	1496.66	1788.85	3 1/2"	70	32	118	105
DA46.1000			●		36.0	500	707.11	1000	1224.74	1581.14	1870.83	2236.07	Weight (Metals) = 3805 gms. Approx				
DA46.1250				●	42.0	625	883.88	1250	1530.93	1976.42	2338.54	2795.08	4"	90	36	128	110
													Weight (Metals) = XX gms. Approx				

120° SPRAY ANGLE	CONNECTION END				ORIFICE SIZE (mm)	FLOW CAPACITY IN LPM AT DIFFERENT PRESSURE							G/A DIMENSION. MM				
	2 1/2"	3"	3 1/2"	4"		PRESSURE [BAR]							CONN.	H	H1	D	A/F
MODEL NO.	BSP BSPT NPT	BSP BSPT NPT	BSP BSPT NPT	BSP BSPT NPT		0.5	1.0	2.0	3.0	5.0	7.0	10.0	CONN.	H	H1	D	A/F
DA38.400	●				25.0	200	282.84	400	489.90	632.46	748.33	894.43	2 1/2"	124	27	83	75
DA38.500	●				28.0	250	353.55	500	612.37	790.57	935.41	1118.03	Weight (Metals) = 2989 gms. Approx				
DA38.625		●			31.3	312.5	441.94	625	765.47	988.21	1169.27	1397.54	3"	128	30	98	85
DA38.710		●			33.3	355	502.05	710	869.57	1122.61	1328.29	1587.61	Weight (Metals) = 5073 gms. Approx				
DA38.800			●		35.4	400	565.69	800	979.80	1264.91	1496.66	1788.85	3 1/2"	155	32	118	105
DA48.1000			●		36.0	500	707.11	1000	1224.74	1581.14	1870.83	2236.07	Weight (Metals) = 8380 gms. Approx				
DA48.1250				●	42.0	625	883.88	1250	1530.93	1976.42	2338.54	2795.08	4"	165	36	128	110
													Weight (Metals) = 9513 gms. Approx				

DB Series Full Cone Spray Nozzles

(Female)

DB



60° SPRAY ANGLE	CONNECTION END				ORIFICE SIZE (mm)	FLOW CAPACITY IN LPM AT DIFFERENT PRESSURE								G/A DIMENSION. MM				
	2 1/2"	3"	3 1/2"	4"		PRESSURE [BAR]								CONN.	H	H1	D	A/F
MODEL NO.	BSP BSPT NPT	BSP BSPT NPT	BSP BSPT NPT	BSP BSPT NPT		0.5	1.0	2.0	3.0	5.0	7.0	10.0						
DB.34.400	●				25.0	200	282.84	400	489.90	632.46	748.33	894.43	2 1/2"	82	27	83	75	
DB.34.500	●				28.0	250	353.55	500	612.37	790.57	935.41	1118.03	Weight (Metals) = XX gms. Approx					
DB.34.625		●			31.3	312.5	441.94	625	765.47	988.21	1169.27	1397.54	3"	90	30	98	85	
DB.34.710		●			33.3	355	502.05	710	869.57	1122.61	1328.29	1587.61	Weight (Metals) = XX gms. Approx					
DB.34.800			●		35.4	400	565.69	800	979.80	1264.91	1496.66	1788.85	3 1/2"	105	32	118	105	
DB.44.1000			●		36.0	500	707.11	1000	1224.74	1581.14	1870.83	2236.07	Weight (Metals) = XX gms. Approx					
DB.44.1250				●	42.0	625	883.88	1250	1530.93	1976.42	2338.54	2795.08	4"	130	36	128	110	
													Weight (Metals) = XX gms. Approx					

90° SPRAY ANGLE	CONNECTION END				ORIFICE SIZE (mm)	FLOW CAPACITY IN LPM AT DIFFERENT PRESSURE								G/A DIMENSION. MM				
	2 1/2"	3"	3 1/2"	4"		PRESSURE [BAR]								CONN.	H	H1	D	A/F
MODEL NO.	BSP BSPT NPT	BSP BSPT NPT	BSP BSPT NPT	BSP BSPT NPT		0.5	1.0	2.0	3.0	5.0	7.0	10.0						
DB.36.400	●				25.0	200	282.84	400	489.90	632.46	748.33	894.43	2 1/2"	82	27	83	75	
DB.36.500	●				28.0	250	353.55	500	612.37	790.57	935.41	1118.03	Weight (Metals) = XX gms. Approx					
DB.36.625		●			31.3	312.5	441.94	625	765.47	988.21	1169.27	1397.54	3"	90	30	98	85	
DB.36.710		●			33.3	355	502.05	710	869.57	1122.61	1328.29	1587.61	Weight (Metals) = XX gms. Approx					
DB.36.800			●		35.4	400	565.69	800	979.80	1264.91	1496.66	1788.85	3 1/2"	105	32	118	105	
DB.46.1000			●		36.0	500	707.11	1000	1224.74	1581.14	1870.83	2236.07	Weight (Metals) = XX gms. Approx					
DB.46.1250				●	42.0	625	883.88	1250	1530.93	1976.42	2338.54	2795.08	4"	130	36	128	110	
													Weight (Metals) = XX gms. Approx					

120° SPRAY ANGLE	CONNECTION END				ORIFICE SIZE (mm)	FLOW CAPACITY IN LPM AT DIFFERENT PRESSURE								G/A DIMENSION. MM				
	2 1/2"	3"	3 1/2"	4"		PRESSURE [BAR]								CONN.	H	H1	D	A/F
MODEL NO.	BSP BSPT NPT	BSP BSPT NPT	BSP BSPT NPT	BSP BSPT NPT		0.5	1.0	2.0	3.0	5.0	7.0	10.0						
DB.38.400	●				25.0	200	282.84	400	489.90	632.46	748.33	894.43	2 1/2"	124	27	83	75	
DB.38.500	●				28.0	250	353.55	500	612.37	790.57	935.41	1118.03	Weight (Metals) = 2989 gms. Approx					
DB.38.625		●			31.3	312.5	441.94	625	765.47	988.21	1169.27	1397.54	3"	128	30	98	85	
DB.38.710		●			33.3	355	502.05	710	869.57	1122.61	1328.29	1587.61	Weight (Metals) = 5073 gms. Approx					
DB.38.800			●		35.4	400	565.69	800	979.80	1264.91	1496.66	1788.85	3 1/2"	155	32	118	105	
DB.48.1000			●		36.0	500	707.11	1000	1224.74	1581.14	1870.83	2236.07	Weight (Metals) = 8380 gms. Approx					
DB.48.1250				●	42.0	625	883.88	1250	1530.93	1976.42	2338.54	2795.08	4"	165	36	128	110	
													Weight (Metals) = 9513 gms. Approx					

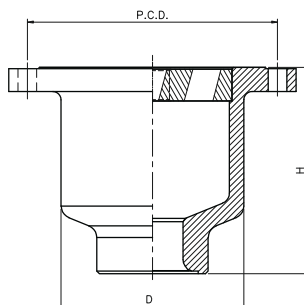
DC Series Full Cone Flanged Connection Spray Nozzles

DC

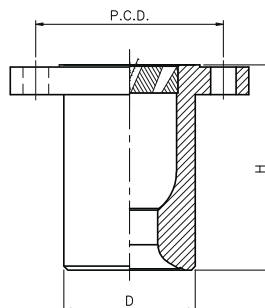
DC Type nozzles are designed to deliver large capacity value, with a carefully designed and machined inside profile, which offers uniform spray distribution and perfect performance even with very low inlet pressure values. The nozzle is made from castings or welded form steel bar.

Typical Application :

Even surface spraying, Cooling and washing of gas, column spraying as well as improvement of chemical reaction by surface enlargement



THIS DESIGN IS IN ABOVE
4" FLANGE END NOZZLE



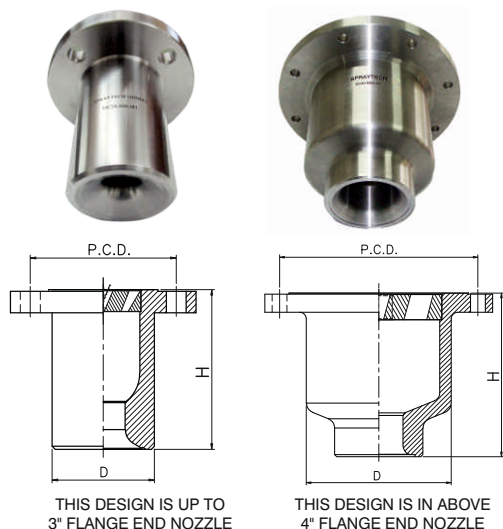
THIS DESIGN IS UP TO
3" FLANGE END NOZZLE



MODEL NO.	ORIFICE SIZE (mm)	FLOW CAPACITY IN LPM AT DIFFERENT PRESSURE VALUES									
		Pressure [bar]							ANSI 16.5 Flange Ø mm	PCD	H
60° SPRAY ANGLE		0.3	0.5	0.7	1.0	2.0	3.0	5.0			
DC34.800 (A)	37.0	309	400	473	565.69	800	979.80	1264.91	(3") 190.5	152.4	140
DC44.1000 (A)	41.4	387	500	591	707.11	1000	1224.74	1581.14	(3") 190.5	152.4	140
DC44.1250 (A)	46.3	484	625	739	883.88	1250	1530.93	1976.42	(4") 228.6	190.5	160
DC44.1600 (A)	52.3	619	800	946	1131.37	1600	1959.59	2529.82	(5") 254.0	215.9	177
DC44.2000 (A)	58.5	774	1000	1183	1414.21	2000	2449.49	3162.28	(5") 254.0	215.9	177
DC44.2500 (A, B)	65.4	968	1250	1479	1767.77	2500	3061.86	3952.85	(6") 279.4	241.3	190
DC44.3125 (A, B)	73.1	1210	1562	1848	2209.71	3125	3827.33	4941.06	(6") 279.4	241.3	190
DC44.4000 (B)	82.7	1549	2000	2366	2828.43	4000	4898.98	6324.56	(8") 342.9	298.4	250
DC44.5000 (B)	92.5	1936	2500	2958	3535.53	5000	6123.72	7905.69	(8") 342.9	298.4	250
DC44.6250 (B)	103.4	2420	3125	3697	4419.42	6250	7654.66	9882.12	(10") 406.4	361.9	290
DC44.8000 (B)	117.0	3098	4000	4732	5656.85	8000	9797.96	12649.11	(10") 406.4	361.9	290

Flange size can be changed to higher size on request

DC Series Full Cone Flanged Connection Spray Nozzles - Large Capacity



DC Type nozzles are designed to deliver large capacity value, with a carefully designed and machined inside profile, which offers uniform spray distribution and perfect performance even with very low inlet pressure values. The nozzle is made from castings or welded form steel bar.

Typical Application :

Even surface spraying, Cooling and washing of gas, column spraying as well as improvement of chemical reaction by surface enlargement

MODEL NO.	ORIFICE SIZE (mm)	FLOW CAPACITY IN LPM AT DIFFERENT PRESSURE VALUES									
		Pressure [bar]							ANSI 16.5 Flange Ø mm	PCD	H
90° SPRAY ANGLE		0.3	0.5	0.7	1.0	2.0	3.0	5.0			
DC36.800 (A)	37.0	309	400	473	565.69	800	979.80	1264.91	(3") 190.5	152.4	140
DC46.1000 (A)	41.4	387	500	591	707.11	1000	1224.74	1581.14	(3") 190.5	152.4	140
DC46.1250 (A)	46.3	484	625	739	883.88	1250	1530.93	1976.42	(4") 228.6	190.5	160
DC46.1600 (A)	52.3	619	800	946	1131.37	1600	1959.59	2529.82	(5") 254.0	215.9	177
DC46.2000 (A)	58.5	774	1000	1183	1414.21	2000	2449.49	3162.28	(5") 254.0	215.9	177
DC46.2500 (A, B)	65.4	968	1250	1479	1767.77	2500	3061.86	3952.85	(6") 279.4	241.3	190
DC46.3125 (A, B)	73.1	1210	1562	1848	2209.71	3125	3827.33	4941.06	(6") 279.4	241.3	190
DC46.4000 (B)	82.7	1549	2000	2366	2828.43	4000	4898.98	6324.56	(8") 342.9	298.4	250
DC46.5000 (B)	92.5	1936	2500	2958	3535.53	5000	6123.72	7905.69	(8") 342.9	298.4	250
DC46.6250 (B)	103.4	2420	3125	3697	4419.42	6250	7654.66	9882.12	(10") 406.4	361.9	290
DC46.8000 (B)	117.0	3098	4000	4732	5656.85	8000	9797.96	12649.11	(10") 406.4	361.9	290
DC48.10000 (B)	127.0	3872.98	3065	5000	7071.07	10000	12247.45	15811.39	(10") 406.4	361.9	290

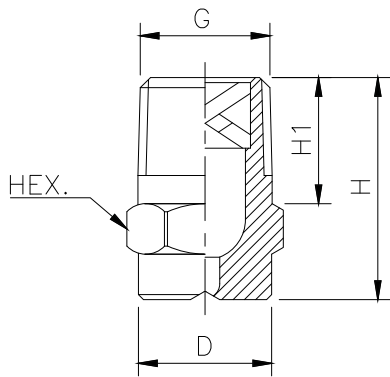
MODEL NO.	ORIFICE SIZE (mm)	FLOW CAPACITY IN LPM AT DIFFERENT PRESSURE VALUES									
		Pressure [bar]							ANSI 16.5 Flange Ø mm	PCD	H
120° SPRAY ANGLE		0.3	0.5	0.7	1.0	2.0	3.0	5.0			
DC38.800 (A)	37.0	309	400	473	565.69	800	979.80	1264.91	(3") 190.5	152.4	140
DC48.1000 (A)	41.4	387	500	591	707.11	1000	1224.74	1581.14	(3") 190.5	152.4	140
DC48.1250 (A)	46.3	484	625	739	883.88	1250	1530.93	1976.42	(4") 228.6	190.5	160
DC48.1600 (A)	52.3	619	800	946	1131.37	1600	1959.59	2529.82	(5") 254.0	215.9	177
DC48.2000 (A)	58.5	774	1000	1183	1414.21	2000	2449.49	3162.28	(5") 254.0	215.9	177
DC48.2500 (A, B)	65.4	968	1250	1479	1767.77	2500	3061.86	3952.85	(6") 279.4	241.3	190
DC48.3125 (A, B)	73.1	1210	1562.5	1848	2209.71	3125	3827.33	4941.06	(6") 279.4	241.3	190
DC48.4000 (B)	82.7	1549	2000	2366	2828.43	4000	4898.98	6324.56	(8") 342.9	298.4	250
DC48.5000 (B)	92.5	1936	2500	2958	3535.53	5000	6123.72	7905.69	(8") 342.9	298.4	250
DC48.6250 (B)	103.4	2420	3125	3697	4419.42	6250	7654.66	9882.12	(10") 406.4	361.9	290
DC48.8000 (B)	117.0	3098	4000	4732	5656.85	8000	9797.96	12649.11	(10") 406.4	361.9	290
DC48.10000 (B)	127.0	3872	3065	5000	7071.07	10000	12247.45	15811.39	(10") 406.4	361.9	290

Flange size can be changed to higher size on request

DD Series Full Cone Spray Nozzles - Square Pattern



Spray Angle 60°/ 90°



The square pattern full cone spray nozzle are used in continuous casting cooling areas. Secondary Cooling areas is of vital importance.

This nozzle gives uniform distribution of cooling water, fine sprays with narrow drop spectrums and quick removing of cooling water from the strand surface which are considered vital for obtaining a perfect steel quality.

Characteristic :

Full cone spray pattern with uniform distribution throughout the approximately square cone.

Typical Applications:

- Cooling and quenching
- Product washing
- Air and gas washers
- Scrubbers
- Liquor washers

60° SPRAY ANGLE	CONNECTION END						ORIFICE SIZE (mm)	FLOW CAPACITY IN LPM AT DIFFERENT PRESSURE							G/A DIMENSION. MM				
	1/8"	1/4"	3/8"	1/2"	3/4"	1"		PRESSURE [BAR]							CONN.	H	H1	D	HEX
MODEL NO.	BSP	BSP	BSP	BSP	BSP	BSP	0.5	1.0	2.0	3.0	5.0	7.0	10.0						
DD14.100	●						1.2	0.50	0.71	1.00	1.22	1.58	1.87	2.24	1/8"	18	6.5	10	11
DD14.150	●						1.5	0.75	1.06	1.50	1.84	2.37	2.81	3.35	Weight (Metals) = 9 gms. Approx				
DD14.175	●						1.6	0.87	1.24	1.75	2.14	2.77	3.27	3.91	1/4"	22	10	13	14
DD14.200	●						1.7	1.00	1.41	2.00	2.45	3.16	3.74	4.47	Weight (Metals) = 17 gms. Approx				
DD14.250	●						1.9	1.25	1.77	2.50	3.06	3.95	4.68	5.59	3/8"	25	10	16	17
DD14.300	●						2.0	1.50	2.12	3.00	3.67	4.74	5.61	6.71	Weight (Metals) = 30 gms. Approx				
DD14.350	●	●					2.2	1.75	2.47	3.50	4.29	5.53	6.55	7.83	1/2"	32	13.2	21	22
DD14.400		●	●				2.4	2.00	2.83	4.00	4.90	6.32	7.48	8.94	Weight (Metals) = 66 gms. Approx				
DD14.475		●	●				2.6	2.37	3.36	4.75	5.82	7.51	8.89	10.62	3/4"	42	15	32	27
DD14.650		●	●				3.1	3.25	4.60	6.50	7.96	10.28	12.16	14.53	Weight (Metals) = 155 gms. Approx				
DA14.800			●				3.4	4.00	5.66	8.00	9.80	12.65	14.97	17.89	1"	56	17	39	36
DD24.100			●				3.8	5.00	7.07	10.00	12.25	15.81	18.71	22.36	Weight (Metals) = 367 gms. Approx				
DD24.125				●			4.2	6.25	8.84	12.50	15.31	19.76	23.39	27.95					
DD24.160				●			4.8	8.00	11.31	16.00	19.60	25.30	29.93	35.78					
DD24.180				●			5.2	9.00	12.73	18.00	22.05	28.46	33.67	40.25					
DD24.200					●		5.4	10.00	14.14	20.00	24.49	31.62	37.42	44.72					
DD24.225					●		5.7	11.25	15.91	22.50	27.56	35.58	42.09	50.31					
DD24.250					●		6.0	12.50	17.68	25.00	30.62	39.53	46.77	55.90					
DD24.320						●	6.8	16.00	22.63	32.00	39.19	50.60	59.87	71.55					
DD24.400						●	7.3	20.00	28.28	40.00	48.99	63.25	74.83	89.44					
DD24.520						●	8.3	26.00	36.77	52.00	63.69	82.22	97.28	116.28					

End Connection : X – BSP, Y - BSPT, Z – NPT Available.

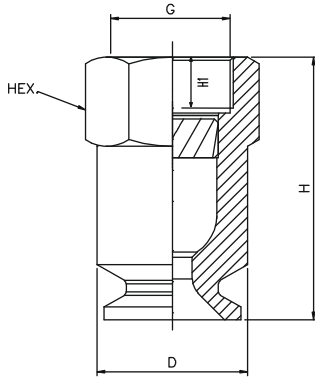
DD Series Full Cone Spray Nozzles - Square Pattern

90° SPRAY ANGLE	CONNECTION END						ORIFICE SIZE (mm)	FLOW CAPACITY IN LPM AT DIFFERENT PRESSURE							G/A DIMENSION. MM				
	1/8"	1/4"	3/8"	1/2"	3/4"	1"		PRESSURE [BAR]							CONN.	H	H1	D	HEX
MODEL NO.	BSP	BSP	BSP	BSP	BSP	BSP	0.5	1.0	2.0	3.0	5.0	7.0	10.0	1/8"	18	6.5	10	11	
DD16.100	●						1.2	0.50	0.71	1.00	1.22	1.58	1.87	2.24	1/8"	18	6.5	10	11
DD16.150	●						1.4	0.75	1.06	1.50	1.84	2.37	2.81	3.35	Weight (Metals) = 9 gms. Approx				
DD16.175	●						1.5	0.87	1.24	1.75	2.14	2.77	3.27	3.91	1/4"	22	10	13	14
DD16.200	●						1.6	1.00	1.41	2.00	2.45	3.16	3.74	4.47	Weight (Metals) = 17 gms. Approx				
DD16.250	●						1.8	1.25	1.77	2.50	3.06	3.95	4.68	5.59	3/8"	25	10	16	17
DD16.300	●						2.0	1.50	2.12	3.00	3.67	4.74	5.61	6.71	Weight (Metals) = 30 gms. Approx				
DD16.350	●	●	●				2.2	1.75	2.47	3.50	4.29	5.53	6.55	7.83	1/2"	32	13.2	21	22
DD16.400	●	●	●				2.3	2.00	2.83	4.00	4.90	6.32	7.48	8.94	Weight (Metals) = 66 gms. Approx				
DD16.475		●	●				2.5	2.37	3.36	4.75	5.82	7.51	8.89	10.62	3/4"	42	15	32	27
DD16.650		●	●				2.9	3.25	4.60	6.50	7.96	10.28	12.16	14.53	Weight (Metals) = 155 gms. Approx				
DD16.800		●	●				3.3	4.00	5.66	8.00	9.80	12.65	14.97	17.89	1"	56	17	39	36
DD26.100			●				3.6	5.00	7.07	10.00	12.25	15.81	18.71	22.36	Weight (Metals) = 367 gms. Approx				
DD26.125			●				4.1	6.25	8.84	12.50	15.31	19.76	23.39	27.95					
DD26.160			●	●			4.6	8.00	11.31	16.00	19.60	25.30	29.93	35.78					
DD26.180				●			5.9	9.00	12.73	18.00	22.05	28.46	33.67	40.25					
DD26.200				●			5.2	10.00	14.14	20.00	24.49	31.62	37.42	44.72					
DD26.225				●			5.5	11.25	15.91	22.50	27.56	35.58	42.09	50.31					
DD26.250				●	●		5.8	12.50	17.68	25.00	30.62	39.53	46.77	55.90					
DD26.320				●	●		6.5	16.00	22.63	32.00	39.19	50.60	59.87	71.55					
DD26.400					●		7.3	20.00	28.28	40.00	48.99	63.25	74.83	89.44					
DD26.520					●	●	8.3	26.00	36.77	52.00	63.69	82.22	97.28	116.28					
DD26.650					●	●	9.3	32.50	45.96	65.00	79.61	102.77	121.60	145.34					
DD26.720					●	●	9.8	36.00	50.91	72.00	88.18	113.8	134.7	161.0					

120° SPRAY ANGLE	CONNECTION END						ORIFICE SIZE (mm)	FLOW CAPACITY IN LPM AT DIFFERENT PRESSURE							G/A DIMENSION. MM				
	1/8"	1/4"	3/8"	1/2"	3/4"	1"		PRESSURE [BAR]							CONN.	H	H1	D	HEX
MODEL NO.	BSP	BSP	BSP	BSP	BSP	BSP	0.5	1.0	2.0	3.0	5.0	7.0	10.0	1/8"	18	6.5	10	11	
DD18.100	●						1.2	0.50	0.71	1.00	1.22	1.58	1.87	2.24	1/8"	18	6.5	10	11
DD18.150	●						1.5	0.75	1.06	1.50	1.84	2.37	2.81	3.35	Weight (Metals) = 9 gms. Approx				
DD18.175	●						1.6	0.87	1.24	1.75	2.14	2.77	3.27	3.91	1/4"	22	10	13	14
DD18.200	●						1.7	1.00	1.41	2.00	2.45	3.16	3.74	4.47	Weight (Metals) = 17 gms. Approx				
DD18.250	●						1.9	1.25	1.77	2.50	3.06	3.95	4.68	5.59	3/8"	25	10	16	17
DD18.300	●						2.0	1.50	2.12	3.00	3.67	4.74	5.61	6.71	Weight (Metals) = 30 gms. Approx				
DD18.350	●						2.3	1.75	2.47	3.50	4.29	5.53	6.55	7.83	1/2"	32	13.2	21	22
DD18.400	●	●	●				2.5	2.00	2.83	4.00	4.90	6.32	7.48	8.94	Weight (Metals) = 66 gms. Approx				
DD18.475	●	●	●				2.7	2.37	3.36	4.75	5.82	7.51	8.89	10.62	3/4"	42	15	32	27
DD18.650		●	●				3.1	3.25	4.60	6.50	7.96	10.28	12.16	14.53	Weight (Metals) = 155 gms. Approx				
DD18.800		●	●				3.5	4.00	5.66	8.00	9.80	12.65	14.97	17.89	1"	56	17	39	36
DD28.100			●				3.9	5.00	7.07	10.00	12.25	15.81	18.71	22.36	Weight (Metals) = 367 gms. Approx				
DD28.125			●				4.3	6.25	8.84	12.50	15.31	19.76	23.39	27.95					
DD28.160			●	●			4.9	8.00	11.31	16.00	19.60	25.30	29.93	35.78					
DD28.180				●			5.2	9.00	12.73	18.00	22.05	28.46	33.67	40.25					
DD28.200				●			5.5	10.00	14.14	20.00	24.49	31.62	37.42	44.72					
DD28.225				●			5.8	11.25	15.91	22.50	27.56	35.58	42.09	50.31					
DD28.250				●	●		6.1	12.50	17.68	25.00	30.62	39.53	46.77	55.90					
DD28.320				●	●		6.9	16.00	22.63	32.00	39.19	50.60	59.87	71.55					
DD28.400					●		7.7	20.00	28.28	40.00	48.99	63.25	74.83	89.44					
DD28.520					●	●	8.8	26.00	36.77	52.00	63.69	82.22	97.28	116.28					
DD28.650					●	●	9.9	32.50	45.96	65.00	79.61	102.77	121.60	145.34					
DD28.720					●	●	10.4	36.00	50.91	72.00	88.18	113.8	134.7	161.0					

End Connection : X – BSP, Y - BSPT, Z – NPT Available.

DD Series Full Cone Spray Nozzles - Square Pattern



Typical Applications:

- Cooling and quenching
- Product washing
- Air and gas washers
- Scrubbers
- Liquor washers
- Dust control
- Fire protection

Full cone spray nozzle square spray pattern with a square impact area and uniform spray of medium to large drops across their entire spray area over a wide range of spraying pressure and flow rates. This uniform spray distribution is the result of unique vane design. Well suited for installation complete coverage of rectangular areas or spray zones

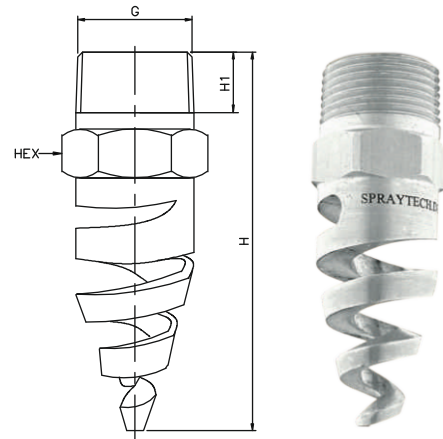
MODEL NO.	CONNECTION END			ORIFICE SIZE (mm)	FLOW CAPACITY IN LPM AT DIFFERENT PRESSURE							G/A DIMENSION. MM				
	1 1/4"	1 1/2"	2"		PRESSURE [BAR]							CONN.	H	H1	D	A/F
90° SPRAY ANGLE	BSP BSPT NPT	BSP BSPT NPT	BSP BSPT NPT		0.5	1.0	2.0	3.0	5.0	7.0	10.0	1 1/4"	H	H1	D	A/F
DD26.650	●			9.7	32.5	45.96	65.00	79.61	102.77	121.60	145.34	1 1/4"		19	49	41
DD26.800	●			10.7	40.00	56.57	80.00	97.98	126.49	149.67	178.89	Weight (Metals) = 525.0 gms. Approx				
DD36.100	●			12.0	50.00	70.71	100.0	122.47	158.11	187.08	223.61	1 1/2"	85	22	59	50
DD36.118		●		13.0	59.00	83.44	118.0	144.52	186.57	220.76	263.86	Weight (Metals) = 915.0 gms. Approx				
DD36.130		●		13.7	65.00	91.92	130.0	159.22	205.55	243.21	290.69	2"	106	24	68	60
DD36.160		●		15.20	80.00	113.14	160.0	195.96	252.98	299.33	357.77	Weight (Metals) = 1535.0 gms. Approx				
DD36.200			●	17.0	100	141.42	200.0	244.95	316.23	374.17	447.21					
DD36.227			●	18.1	113.5	160.51	227.0	278.02	358.92	424.68	507.59					
DD36.250			●	19.0	125	176.78	250.0	306.19	395.19	467.71	559.02					
DD36.300			●	20.5	150	212.13	300.0	367.42	474.34	561.25	670.82					
DD36.337			●	22.0	168.5	238.29	337.0	412.74	532.84	630.47	753.55					

MODEL NO.	CONNECTION END			ORIFICE SIZE (mm)	FLOW CAPACITY IN LPM AT DIFFERENT PRESSURE							G/A DIMENSION. MM				
	1 1/4"	1 1/2"	2"		PRESSURE [BAR]							CONN.	H	H1	D	A/F
120° SPRAY ANGLE	BSP BSPT NPT	BSP BSPT NPT	BSP BSPT NPT		0.5	1.0	2.0	3.0	5.0	7.0	10.0	CONN.	H	H1	D	A/F
DD28.800	●			11.4	40.00	56.57	80.00	97.98	126.49	149.67	178.89	1 1/4"	74	19	49	41
DD38.100	●			12.7	50.00	70.71	100.0	122.47	158.11	187.08	223.61	Weight (Metals) = XX gms. Approx				
DD38.118	●	●		13.8	59.00	83.44	118.0	144.52	186.57	220.76	263.86	1 1/2"	85	22	59	50
DD38.130	●	●		14.5	65.00	91.92	130.0	159.22	205.55	243.21	290.69	Weight (Metals) = XX gms. Approx				
DD38.160		●		16.1	80.00	113.14	160.0	195.96	252.98	299.33	357.77	2"	106	24	68	60
DD38.200			●	18.0	100.0	141.42	200.0	244.95	316.23	374.17	447.21	Weight (Metals) = XX gms. Approx				
DD38.227			●	19.1	113.5	160.51	227.0	278.02	358.92	424.68	507.59					
DD38.250			●	20.1	125.0	176.78	250.0	306.19	395.19	467.71	559.02					
DD38.300			●	21.5	150	212.13	300.0	367.42	474.34	561.25	670.82					
DD38.337			●	23.3	168.5	238.29	337.0	412.74	532.84	630.47	753.55					

DF Series Spiral Full Cone Spray Nozzles

DF

- Characteristic** : The absence of any internal parts make these nozzles non-clogging.
- Design** : One piece construction, non clogging type.
- Application** : Gas Washing, Cooling Towers , Fire Fighting Systems.
- Flow Rate** : 5 LPM TO 3410 LPM
- Pressure** : 2.0 Kg/cm² or Specified
- Spray Angle** : 60° To 180°
- End Connection** : 1/4" TO 4" BSP/ BSPT / NPT
- M.O.C.** : SS. 316, 304, BRASS, PVDF, PVC, PP, Teflon®



The helix spiral full cone nozzles combine small nozzle sizes with wide flow openings.

60° SPRAY ANGLE	CONNECTION END										ORIFICE SIZE (mm)	FLOW CAPACITY IN LPM AT DIFFERENT PRESSURE							G/A DIMENSION. MM			
	1/4"	3/8"	1/2"	3/4"	1"	1 1/2"	2"	3"	4"			PRESSURE [BAR]							CONN.	H	H1	HEX
MODEL NO.	BSP	BSP	BSP	BSP	BSP	BSP	BSP	BSP	BSP	BSP		0.5	1.0	2.0	3.0	5.0	7.0	10.0				
DF14.475	●										2.4	2.37	3.36	4.75	5.82	7.51	8.89	10.62	1/4"	48	10	14
DF14.650	●										2.8	3.25	4.60	6.50	7.96	10.28	12.16	14.53	Weight (Metals) = 27.0 gms. Approx			
DF14.800	●										3.1	4.00	5.66	8.00	9.80	12.65	14.97	17.89	3/8"	58	10	17
DF24.100	●	●									3.5	5.00	7.07	10.00	12.25	15.81	18.71	22.36	Weight (Metals) = 53.7 gms. Approx			
DF24.125	●	●									3.9	6.25	8.84	12.50	15.31	19.76	23.39	27.95	1/2"	76	13.2	22
DF24.160	●	●									4.4	8.00	11.31	16.00	19.60	25.30	29.93	35.78	Weight (Metals) = 80.0 gms. Approx			
DF24.180	●	●									4.6	9.00	12.73	18.00	22.05	28.46	33.67	40.25	3/4"	86	14.5	27
DF24.200	●	●									4.9	10.00	14.14	20.00	24.49	31.62	37.42	44.72	Weight (Metals) = 170.0 gms. Approx			
DF24.225		●									5.2	11.25	15.91	22.50	27.56	35.58	42.09	50.31	1"	108	16.8	36
DF24.250		●									5.5	12.50	17.68	25.00	30.62	39.53	46.77	55.90	Weight (Metals) = 323.0 gms. Approx			
DF24.320		●									6.2	16.00	22.63	32.00	39.19	50.60	59.87	71.55	1 1/2"	138	19.1	51
DF24.400		●									7.0	20.00	28.28	40.00	48.99	63.25	74.83	89.44	Weight (Metals) = 634.0 gms. Approx			
DF24.520		●									7.9	26.00	36.77	52.00	63.69	82.22	97.28	116.28	2"	148	23.4	64
DF24.650			●								8.9	32.5	45.96	65.00	79.61	102.77	121.60	145.34	Weight (Metals) = XX gms. Approx			
DF24.800			●								9.8	40.00	56.57	80.00	97.98	126.49	149.67	178.89	3"	216	29.8	89
DF34.100			●								11.0	50.00	70.71	100.0	122.47	158.11	187.08	223.61	Weight (Metals) = XX gms. Approx			
DF34.118			●								12.0	59.00	83.44	118.0	144.52	186.57	220.76	263.86				
DF34.130				●							12.6	65.00	91.92	130.0	159.22	205.55	243.21	290.69				
DF34.160				●							13.9	80.00	113.14	160.0	195.96	252.98	299.33	357.77				
DF34.200					●						15.6	100	141.42	200.0	244.95	316.23	374.17	447.21				
DF34.227					●						16.6	113.5	160.51	227.0	278.02	358.92	424.68	507.59				
DF34.250					●						17.4	125	176.78	250.0	306.19	395.19	467.71	559.02				
DF34.300					●						19.0	150	212.13	300	367.42	474.34	561.25	670.82				
DF34.337					●						20.2	168.5	238.29	337.0	412.74	532.84	630.47	753.55				
DF34.400						●					22.0	200	282.84	400.0	489.90	632.46	748.33	894.43				
DF34.500						●					24.6	250	353.55	500.0	612.37	790.57	935.41	1118.03				
DF34.625						●					27.5	312.5	441.94	625.0	765.47	988.21	1169.27	1397.54				
DF34.710						●					29.3	355	502.05	710.0	869.57	1122.61	1328.29	1587.61				
DF34.800						●					31.1	400	565.69	800.0	979.80	1264.91	1496.66	1788.85				
DF44.1000							●				34.8	500	707.11	1000	1224.74	1581.14	1870.83	2236.07				
DF44.1250							●				38.9	625	883.88	1250	1530.93	1976.42	2338.54	2795.08				
DF46.1600							●				44.0	800	1131	1600	1959.59	2529.82	2993.33	3577.71				
DF44.2000								●			49.2	1000	1414	2000	2449.49	3162.28	3741.66	4472.14				
DF44.2500								●			55.1	1250	1767	2500	3061.86	3952.85	4677.07	5590.17				
DF46.3125								●			61.6	1562.5	2209	3125	3827.33	4941.06	5846.34	6987.71				

End Connection : X – BSP, Y - BSPT, Z – NPT Available.

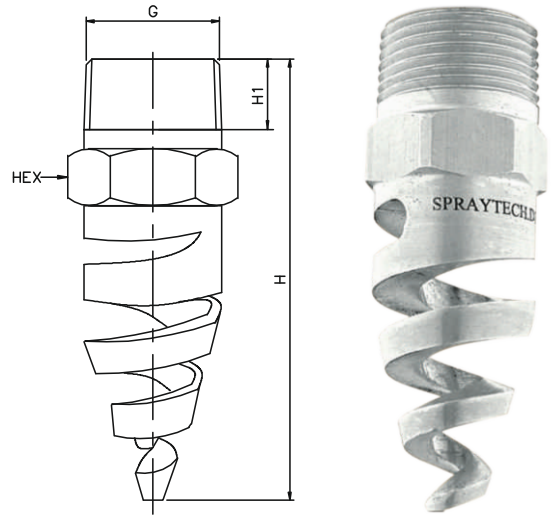
DF Series Spiral Full Cone Spray Nozzles

90° SPRAY ANGLE	CONNECTION END										FLOW CAPACITY IN LPM AT DIFFERENT PRESSURE							G/A DIMENSION. MM			
	1/4"	3/8"	1/2"	3/4"	1"	1 1/2"	2"	3"	4"	ORIFICE SIZE (mm)	PRESSURE [BAR]							CONN.	H	H1	HEX
MODEL NO.	BSP	BSP	BSP	BSP	BSP	BSP	BSP	BSP	BSP		0.5	1.0	2.0	3.0	5.0	7.0	10.0				
DF16.475	●									2.4	2.37	3.36	4.75	5.82	7.51	8.89	10.62	1/4"	48	10	14
DF16.650	●									2.8	3.25	4.60	6.50	7.96	10.28	12.16	14.53	Weight (Metals) = 27.0 gms. Approx			
DF16.800	●									3.1	4.00	5.66	8.00	9.80	12.65	14.97	17.89	3/8"	58	10	17
DF26.100	●	●								3.5	5.00	7.07	10.00	12.25	15.81	18.71	22.36	Weight (Metals) = 53.7 gms. Approx			
DF26.125	●	●	●							3.9	6.25	8.84	12.50	15.31	19.76	23.39	27.95	1/2"	76	13.2	22
DF26.160	●	●	●	●						4.4	8.00	11.31	16.00	19.60	25.30	29.93	35.78	Weight (Metals) = 80.0 gms. Approx			
DF26.180	●	●	●	●	●					4.6	9.00	12.73	18.00	22.05	28.46	33.67	40.25	3/4"	86	14.5	27
DF26.200	●	●	●	●	●	●				4.9	10.00	14.14	20.00	24.49	31.62	37.42	44.72	Weight (Metals) = 170.0 gms. Approx			
DF26.225	●	●	●	●	●	●	●			5.2	11.25	15.91	22.50	27.56	35.58	42.09	50.31	1"	108	16.8	36
DF26.250	●	●	●	●	●	●	●	●		5.5	12.50	17.68	25.00	30.62	39.53	46.77	55.90	Weight (Metals) = 323.0 gms. Approx			
DF26.320	●	●	●	●	●	●	●	●	●	6.2	16.00	22.63	32.00	39.19	50.60	59.87	71.55	1 1/2"	138	19.1	51
DF26.400	●	●	●	●	●	●	●	●	●	7.0	20.00	28.28	40.00	48.99	63.25	74.83	89.44	Weight (Metals) = 634.0 gms. Approx			
DF26.520	●	●	●	●	●	●	●	●	●	7.9	26.00	36.77	52.00	63.69	82.22	97.28	116.28	2"	148	23.4	64
DF26.650	●	●	●	●	●	●	●	●	●	8.9	32.5	45.96	65.00	79.61	102.77	121.60	145.34	Weight (Metals) = XX gms. Approx			
DF26.800	●	●	●	●	●	●	●	●	●	9.8	40.00	56.57	80.00	97.98	126.49	149.67	178.89	3"	216	29.8	89
DF36.100	●	●	●	●	●	●	●	●	●	11.0	50.00	70.71	100.0	122.47	158.11	187.08	223.61	Weight (Metals) = XX gms. Approx			
DF36.118	●	●	●	●	●	●	●	●	●	12.0	59.00	83.44	118.0	144.52	186.57	220.76	263.86				
DF36.130	●	●	●	●	●	●	●	●	●	12.6	65.00	91.92	130.0	159.22	205.55	243.21	290.69				
DF36.160	●	●	●	●	●	●	●	●	●	13.9	80.00	113.14	160.0	195.96	252.98	299.33	357.77				
DF36.200	●	●	●	●	●	●	●	●	●	15.6	100	141.42	200.0	244.95	316.23	374.17	447.21				
DF36.227	●	●	●	●	●	●	●	●	●	16.6	113.5	160.51	227.0	278.02	358.92	424.68	507.59				
DF36.250	●	●	●	●	●	●	●	●	●	17.4	125	176.78	250.0	306.19	395.19	467.71	559.02				
DF36.300	●	●	●	●	●	●	●	●	●	19.0	150	212.13	300	367.42	474.34	561.25	670.82				
DF36.337	●	●	●	●	●	●	●	●	●	20.2	168.5	238.29	337.0	412.74	532.84	630.47	753.55				
DF36.400	●	●	●	●	●	●	●	●	●	22.0	200	282.84	400.0	489.90	632.46	748.33	894.43				
DF36.500	●	●	●	●	●	●	●	●	●	24.6	250	353.55	500.0	612.37	790.57	935.41	1118.03				
DF36.625	●	●	●	●	●	●	●	●	●	27.5	312.5	441.94	625.0	765.47	988.21	1169.27	1397.54				
DF36.710	●	●	●	●	●	●	●	●	●	29.3	355	502.05	710.0	869.57	1122.61	1328.29	1587.61				
DF36.800	●	●	●	●	●	●	●	●	●	31.1	400	565.69	800.0	979.80	1264.91	1496.66	1788.85				
DF46.1000	●	●	●	●	●	●	●	●	●	34.8	500	707.11	1000	1224.74	1581.14	1870.83	2236.07				
DF46.1250	●	●	●	●	●	●	●	●	●	38.9	625	883.88	1250	1530.93	1976.42	2338.54	2795.08				
DF46.1600	●	●	●	●	●	●	●	●	●	44.0	800	1131	1600	1959.59	2529.82	2993.33	3577.71				
DF46.2000	●	●	●	●	●	●	●	●	●	49.2	1000	1414	2000	2449.49	3162.28	3741.66	4472.14				
DF46.2500	●	●	●	●	●	●	●	●	●	55.1	1250	1767	2500	3061.86	3952.85	4677.07	5590.17				
DF46.3125	●	●	●	●	●	●	●	●	●	61.6	1562.5	2209	3125	3827.33	4941.06	5846.34	6987.71				

120° SPRAY ANGLE	CONNECTION END										FLOW CAPACITY IN LPM AT DIFFERENT PRESSURE							G/A DIMENSION. MM			
	1/4"	3/8"	1/2"	3/4"	1"	1 1/2"	2"	3"	4"	ORIFICE SIZE (mm)	PRESSURE [BAR]							CONN.	H	H1	HEX
MODEL NO.	BSP	BSP	BSP	BSP	BSP	BSP	BSP	BSP	BSP		0.5	1.0	2.0	3.0	5.0	7.0	10.0				
DF18.475	●									2.4	2.37	3.36	4.75	5.82	7.51	8.89	10.62	1/4"	48	10	14
DF18.650	●									2.8	3.25	4.60	6.50	7.96	10.28	12.16	14.53	Weight (Metals) = XX gms. Approx			
DF18.800	●									3.1	4.00	5.66	8.00	9.80	12.65	14.97	17.89	3/8"	58	10	17
DF28.100	●	●								3.5	5.00	7.07	10.00	12.25	15.81	18.71	22.36	Weight (Metals) = XX gms. Approx			
DF28.125	●	●	●							3.9	6.25	8.84	12.50	15.31	19.76	23.39	27.95	1/2"	76	13.2	22
DF28.160	●	●	●	●						4.4	8.00	11.31	16.00	19.60	25.30	29.93	35.78	Weight (Metals) = XX gms. Approx			
DF28.180	●	●	●	●	●					4.6	9.00	12.73	18.00	22.05	28.46	33.67	40.25	3/4"	86	14.5	27
DF28.200	●	●	●	●	●	●				4.9	10.00	14.14	20.00	24.49	31.62	37.42	44.72	Weight (Metals) = XX gms. Approx			
DF28.225	●	●	●	●	●	●	●			5.2	11.25	15.91	22.50	27.56	35.58	42.09	50.31	1"	108	16.8	36
DF28.250	●	●	●	●	●	●	●	●		5.5	12.50	17.68	25.00	30.62	39.53	46.77	55.90	Weight (Metals) = XX gms. Approx			
DF28.320	●	●	●	●	●	●	●	●	●	6.2	16.00	22.63	32.00	39.19	50.60	59.87	71.55	1 1/2"	138	19.1	51
DF28.400	●	●	●	●	●	●	●	●	●	7.0	20.00	28.28	40.00	48.99	63.25	74.83	89.44	Weight (Metals) = XX gms. Approx			
DF28.520	●	●	●	●	●	●	●	●	●	7.9	26.00	36.77	52.00	63.69	82.22	97.28	116.28	2"	148	23.4	64
DF28.650	●	●	●	●	●	●	●	●	●	8.9	32.5	45.96	65.00	79.61	102.77	121.60	145.34	Weight (Metals) = XX gms. Approx			
DF28.800	●	●	●	●	●	●	●	●	●	9.8	40.00	56.57	80.00	97.98	126.49	149.67	178.89	3"	216	29.8	89
DF38.100	●	●	●	●	●	●	●	●	●	11.0	50.00	70.71	100.0	122.47	158.11	187.08	223.61	Weight (Metals) = XX gms. Approx			
DF38.118	●	●	●	●	●	●	●	●	●	12.0	59.00	83.44	118.0	144.52	186.57	220.76	263.86				
DF38.130	●	●	●	●	●	●	●	●	●	12.6	65.00	91.92	130.0	159.22	205.55	243.21	290.69				
DF38.160	●	●	●	●	●	●	●	●	●	13.9	80.00	113.14	160.0	195.96	252.98	299.33	357.77				
DF38.200	●	●	●	●	●	●	●	●	●	15.6	100	141.42	200.0	244.95	316.23	374.17	447.21				
DF38.227	●	●	●	●	●	●	●	●	●	16.6	113.5	160.51	227.0	278.02	358.92	424.68	507.59				
DF38.250	●	●	●	●	●	●	●	●	●	17.4	125	176.78	250.0	306.19	395.19	467.71	559.02				
DF38.300	●	●	●	●	●	●	●	●	●	19.0	150	212.13	300	367.42	474.34	561.25	670.82				
DF38.337	●	●	●	●	●	●	●	●	●	20.2	168.5	238.29	337.0	412.74	532.84	630.47	753.55				
DF38.400	●	●	●	●	●	●	●	●	●	22.0	200	282.84	400.0	489.90	632.46	748.33	894.43				
DF38.500	●	●	●	●	●	●	●	●	●	24.6	250	353.55	500.0	612.37	790.57	935.41	1118.03				
DF38.625	●	●	●	●	●	●	●	●	●	27.5	312.5	441.94	625.0	765.47	988.21	1169.27	1397.54				
DF38.710	●	●	●	●	●	●	●	●	●	29.3	355	502.05	710.0	869.57	1122.61	1328.29	1587.61				
DF38.800	●	●	●	●	●	●	●	●	●	31.1	400	565.69	800.0	979.80	1264.91	1496.66	1788.85				
DF48.1000	●	●	●	●	●	●	●	●	●	34.8	500	707.11	1000	1224.74	1581.14	1870.83	2236.07				
DF48.1250	●	●	●	●	●	●	●	●	●	38.9	625	883.88	1250	1530.93	1976.42	2338.54	2795.08				
DF48.1600	●	●	●	●	●	●	●	●	●	44.0	800	1131	1600	1959.59	2529.82	2993.33	3577.71				
DF48.2000	●	●	●	●	●	●	●	●	●	49.2	1000	1414	2000	2449.49	3162.28	3741.66	4472.14			</	

DF Series Spiral Full Cone Spray Nozzles

- Characteristic** : Absence of any internal parts make these nozzles non-clogging.
- Design** : One piece construction, non clogging type.
- Application** : Gas Scrubbing, Washing, Cooling Towers , Fire Fighting Systems.
- Flow Rate** : 5 LPM TO 3410 LPM
- Pressure** : 2.0 Kg/cm² or Specified
- Spray Angle** : 60° To 180°
- End Connection** : 1/4" TO 4" BSP/ BSPT / NPT
- M.O.C.** : SS. 316, 304, BRASS, PVDF, PVC, PP, Teflon®



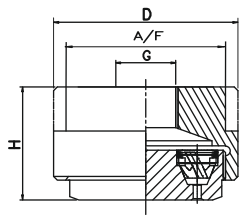
180° SPRAY ANGLE	CONNECTION END							ORIFICE SIZE (mm)	FLOW CAPACITY IN LPM AT DIFFERENT PRESSURE							G/A DIMENSION. MM			
	1/4"	3/8"	1/2"	3/4"	1"	1 1/2"	2"		PRESSURE [BAR]							CONN.	H	H1	HEX
MODEL NO.	BSP	BSP	BSP	BSP	BSP	BSP	BSP	0.5	1.0	2.0	3.0	5.0	7.0	10.0					
DF19.475	●							2.4	2.37	3.36	4.75	5.82	7.51	8.89	10.62	1/4"	48	10	14
DF19.650	●							2.8	3.25	4.60	6.50	7.96	10.28	12.16	14.53	Weight (Metals) = XX gms. Approx			
DF19.800	●							3.1	4.00	5.66	8.00	9.80	12.65	14.97	17.89	3/8"	58	10	17
DF29.100	●	●						3.5	5.00	7.07	10.00	12.25	15.81	18.71	22.36	Weight (Metals) = XX gms. Approx			
DF29.125	●	●						3.9	6.25	8.84	12.50	15.31	19.76	23.39	27.95	1/2"	76	13.2	22
DF29.160	●	●						4.4	8.00	11.31	16.00	19.60	25.30	29.93	35.78	Weight (Metals) = XX gms. Approx			
DF29.180	●	●						4.6	9.00	12.73	18.00	22.05	28.46	33.67	40.25	3/4"	86	14.5	27
DF29.200	●	●						4.9	10.00	14.14	20.00	24.49	31.62	37.42	44.72	Weight (Metals) = XX gms. Approx			
DF29.225		●						5.2	11.25	15.91	22.50	27.56	35.58	42.09	50.31	1"	108	16.8	36
DF29.250		●						5.5	12.50	17.68	25.00	30.62	39.53	46.77	55.90	Weight (Metals) = XX gms. Approx			
DF29.320		●						6.2	16.00	22.63	32.00	39.19	50.60	59.87	71.55	1 1/2"	138	19.1	51
DF29.400		●						7.0	20.00	28.28	40.00	48.99	63.25	74.83	89.44	Weight (Metals) = XX gms. Approx			
DF29.520		●						7.9	26.00	36.77	52.00	63.69	82.22	97.28	116.28	2"	148	23.4	64
DF29.650			●					8.9	32.5	45.96	65.00	79.61	102.77	121.60	145.34	Weight (Metals) = XX gms. Approx			
DF29.800			●					9.8	40.00	56.57	80.00	97.98	126.49	149.67	178.89				
DF39.100			●					11.0	50.00	70.71	100.0	122.47	158.11	187.08	223.61				
DF39.118			●					12.0	59.00	83.44	118.0	144.52	186.57	220.76	263.86				
DF39.130				●				12.6	65.00	91.92	130.0	159.22	205.55	243.21	290.69				
DF39.160				●				13.9	80.00	113.14	160.0	195.96	252.98	299.33	357.77				
DF39.200					●			15.6	100	141.42	200.0	244.95	316.23	374.17	447.21				
DF39.227					●			16.6	113.5	160.51	227.0	278.02	358.92	424.68	507.59				
DF39.250					●			17.4	125	176.78	250.0	306.19	395.19	467.71	559.02				
DF39.300					●			19.0	150	212.13	300.0	367.42	474.34	561.25	670.82				
DF39.337					●			20.2	168.5	238.29	337.0	412.74	532.84	630.47	753.55				
DF39.400						●		22.0	200	282.84	400.0	489.90	632.46	748.33	894.43				
DF39.500						●		24.6	250	353.55	500.0	612.37	790.57	935.41	1118.03				
DF39.625						●		27.5	312.5	441.94	625.0	765.47	988.21	1169.27	1397.54				
DF39.710							●	29.3	355	502.05	710.0	869.57	1122.61	1328.29	1587.61				
DF39.800							●	31.1	400	565.69	800.0	979.80	1264.91	1496.66	1788.85				
DF49.1000							●	34.8	500	707.11	1000	1224.74	1581.14	1870.83	2236.07				
DF49.1250							●	38.9	625	883.88	1250	1530.93	1976.42	2338.54	2795.08				

End Connection : X – BSP, Y – BSPT, Z – NPT Available.

DG Series Multiple Full Cone Spray Nozzles



Multiple spray nozzles, consisting of seven fine atomizing hollow cone nozzles, provide a fog-like full cone pattern with relatively high flow volumes. The overlapping hollow cone nozzles produce a 130° full cone spray pattern of very fine droplets that cannot be achieved by a single orifice spray nozzle of the same flow rate size. The resulting increased droplet surface area of the atomized liquid provides greater efficiency in gas treatment and cooling application ideal for reaction towers which do not use packing.



Spray Angle 75°

Characteristic :

This type of nozzle gives fine atomization with the aid of several hollow cones spraying into one another.

Applications :

- Cooling Of Gaseous And Solid Material
- In Desuperheaters
- Chlorine Precipitation
- For Improving The Chemical Reaction By Means Of Enlarging the Contact Surface

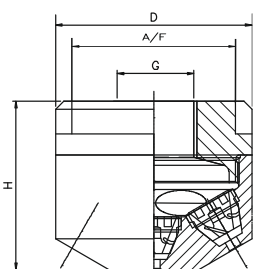
75° SPRAY ANGLE	CONNECTION END		ORIFICE SIZE (mm)	FLOW CAPACITY IN LPM AT DIFFERENT PRESSURE VALUES							G/A DIMENSION. MM			
	1/2"	3/4"		PRESSURE [BAR]							CONN.	H	D	A/F
MODEL NO.	BSP BSPT NPT	BSP BSPT NPT		0.5	1.0	2.0	3.0	5.0	7.0	10.0				
DG15.150	●		0.5	0.75	1.06	1.50	1.84	2.37	2.81	3.35	1/2"	30	50	46
DG15.200	●		0.5	1.00	1.41	2.00	2.45	3.16	3.74	4.47	Weight (Metals) = 216.0 gms. Approx			
DG15.300	●		1.0	1.50	2.12	3.00	3.67	4.74	5.61	6.71	3/4"	46	75	65
DG15.400	●		1.5	2.00	2.83	4.00	4.90	6.32	7.48	8.94	Weight (Metals) = 716.0 gms. Approx			
DG15.475	●		1.5	2.37	3.36	4.75	5.82	7.51	8.89	10.62				
DG15.650	●		2.0	3.25	4.60	6.50	7.96	10.28	12.16	14.53				
DG15.800	●	●	2.2	4.00	5.66	8.00	9.80	12.65	14.97	17.89				
DG25.100	●	●	2.5	5.00	7.07	10.00	12.25	15.81	18.71	22.36				
DG25.125	●	●	2.8	6.25	8.84	12.50	15.31	19.76	23.39	27.95				
DG25.160		●	3.2	8.00	11.31	16.00	19.60	25.30	29.93	35.78				
DG25.200		●	3.5	10.00	14.14	20.00	24.49	31.62	37.42	44.72				
DG25.225		●	3.8	11.25	15.91	22.50	27.56	35.58	42.09	50.31				
DG25.250		●	4.0	12.50	17.68	25.00	30.62	39.53	46.77	55.90				
DG25.320		●	4.5	16.00	22.63	32.00	39.19	50.60	59.87	71.55				
DG25.400		●	5.0	20.00	28.28	40.00	48.99	63.25	74.83	89.44				
DG25.520		●	5.7	26.00	36.77	52.00	63.69	82.22	97.28	116.28				

DG Series Multiple Full Cone Spray Nozzles

DG



Multiple spray nozzles, consisting of seven fine atomizing hollow cone nozzles, provide a fog-like full cone pattern with relatively high flow volumes. The overlapping hollow cone nozzles produce a 130° full cone spray pattern of very fine droplets that cannot be achieved by a single orifice spray nozzle of the same flow rate size. The resulting increased droplet surface area of the atomized liquid provides greater efficiency in gas treatment and cooling application ideal for reaction towers which do not use packing.



Spray Angle 130°

Characteristic :

This type of nozzle gives fine atomization with the aid of several hollow cones spraying into one another.

Applications :

- Cooling Of Gaseous And Solid Material
- In Desuperheaters
- Chlorine Precipitation
- For Improving The Chemical Reaction By Means Of Enlarging the Contact Surface

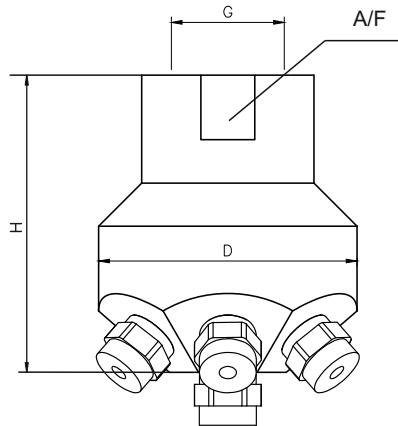
130° SPRAY ANGLE	CONNECTION END		ORIFICE SIZE (mm)	FLOW CAPACITY IN LPM AT DIFFERENT PRESSURE VALUES							G/A DIMENSION. MM			
	1/2"	3/4"		PRESSURE [BAR]							CONN.	H	D	A/F
MODEL NO.	BSP BSPT NPT	BSP BSPT NPT		0.5	1.0	2.0	3.0	5.0	7.0	10.0				
DG19.150	●		0.5	0.75	1.06	1.50	1.84	2.37	2.81	3.35	1/2"	38	40	30
DG19.200	●		0.5	1.00	1.41	2.00	2.45	3.16	3.74	4.47	Weight (Metals) = 216.0 gms. Approx			
DG19.300	●		1.0	1.50	2.12	3.00	3.67	4.74	5.61	6.71	3/4"	51.5	60	50
DG19.400	●		1.5	2.00	2.83	4.00	4.90	6.32	7.48	8.94	Weight (Metals) = 216.0 gms. Approx			
DG19.475	●		1.5	2.37	3.36	4.75	5.82	7.51	8.89	10.62				
DG19.650	●		2.0	3.25	4.60	6.50	7.96	10.28	12.16	14.53				
DG19.800	●	●	2.0	4.00	5.66	8.00	9.80	12.65	14.97	17.89				
DG29.100	●	●	2.2	5.00	7.07	10.00	12.25	15.81	18.71	22.36				
DG29.125	●	●	2.5	6.25	8.84	12.50	15.31	19.76	23.39	27.95				
DG29.160		●	2.8	8.00	11.31	16.00	19.60	25.30	29.93	35.78				
DG29.200		●	3.2	10.00	14.14	20.00	24.49	31.62	37.42	44.72				
DG29.225		●	3.4	11.25	15.91	22.50	27.56	35.58	42.09	50.31				
DG29.250		●	3.5	12.50	17.68	25.00	30.62	39.53	46.77	55.90				
DG29.320		●	4.0	16.00	22.63	32.00	39.19	50.60	59.87	71.55				
DG29.400		●	4.5	20.00	28.28	40.00	48.99	63.25	74.83	89.44				
DG29.520		●	5.1	26.00	36.77	52.00	63.69	82.22	97.28	116.28				
DG29.650		●	5.7	32.50	45.96	65.00	79.61	102.77	121.60	145.34				

DH Series Multiple Full Cone Spray Nozzles

DH

Application :

- Gas Scrubbing
- Gas Cooling
- Dust Control
- Tank Rinsing
- Humidifying Applications



Multiple Full Cone Nozzles

The nozzle assembly consists of a nozzle body and seven removable atomizing spray caps. Each cap has an internal core which is easily removed for cleaning or replacement. The nozzle provides large flow capacities with relatively small drops.

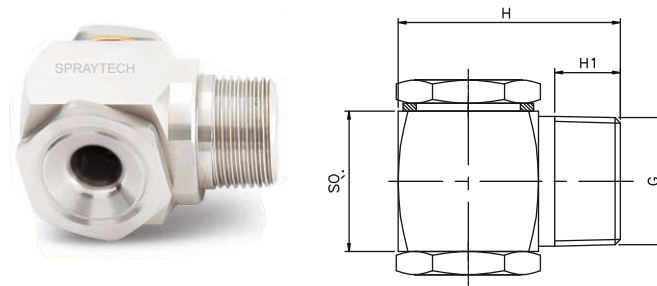
Characteristic :

With the aid of multiple fine full cone nozzles it gives large full cone with small droplets.

130° SPRAY ANGLE	CONNECTION END			ORIFICE SIZE (mm)	FLOW CAPACITY IN LPM AT DIFFERENT PRESSURE							G/A DIMENSION. MM			
	3/4"	1"	1 1/2"		PRESSURE [BAR]							CONN.	H	D	A/F
MODEL NO.	BSP BSPT NPT	BSP BSPT NPT	BSP BSPT NPT		0.5	1.0	2.0	3.0	5.0	7.0	10.0				
DH29.125	●			2.5	6.25	8.84	12.50	15.31	19.76	23.39	27.95	3/4"	44	60	50
DH29.160	●			2.8	8.00	11.31	16.00	19.60	25.30	29.93	35.78	Weight (Metals) = 700 gms. Approx			
DH29.200	●			3.2	10.00	14.14	20.00	24.49	31.62	37.42	44.72	1"	50	60	50
DH29.225	●			3.4	11.25	15.91	22.50	27.56	35.58	42.09	50.31	Weight (Metals) = XXX gms. Approx			
DH29.250	●			3.5	12.50	17.68	25.00	30.62	39.53	46.77	55.90	1 1/2"	65	90	80
DH29.320	●			4.0	16.00	22.63	32.00	39.19	50.60	59.87	71.55	Weight (Metals) = XXX gms. Approx			
DH29.400	●			4.5	20.00	28.28	40.00	48.99	63.25	74.83	89.44				
DH29.520	●			5.1	26.00	36.77	52.00	63.69	82.22	97.28	116.28				
DH29.650	●			5.7	32.50	45.96	65.00	79.61	102.77	121.60	145.34				
DH29.800		●		6.3	40.00	56.57	80.00	97.98	126.49	149.67	178.89				
DH39.100		●		7.1	50.00	70.71	100.0	122.47	158.11	187.08	223.61				
DH39.118		●		7.7	59.00	83.44	118.0	144.52	186.57	220.76	263.86				
DH39.130		●	●	8.1	65.00	91.92	130.0	159.22	205.55	243.21	290.69				
DH39.160			●	8.9	80.00	113.14	160.0	195.96	252.98	299.33	357.77				
DH39.200			●	10.0	100.0	141.42	200.0	244.95	316.23	374.17	447.21				
DH39.227			●	10.7	113.5	160.51	227.0	278.02	358.92	424.68	507.59				

DI Series Tangential Entry Vaneless Full Cone Spray Nozzles

DI



ONE PIECE BODY
VANE LESS FULL CONE (TANGENTIAL ENTRY)

Typical Applications :

Washing and cleaning cooling of gas or solid product surface spraying Improvement of chemical reactions.

MODEL NO.	CONNECTION END					ORIFIC SIZE (mm)	FLOW CAPACITY IN LPM AT DIFFERENT PRESSURE							G/A DIMENSION. MM			
	1/4"	3/8"	1/2"	3/4"	1"		PRESSURE [BAR]							CONN.	H	H1	SQ
	BSP	BSP	BSP	BSP	BSP		0.5	1.0	2.0	3.0	5.0	7.0	10.0				
60° SPRAYNOZZLE																	
DI14.350	●	●				2.6	1.75	2.47	3.50	4.29	5.53	6.55	7.83	1/4"	35	10	20
DI14.400	●	●				2.9	2.00	2.83	4.00	4.90	6.32	7.48	8.94	Weight (Metals) = 72.0 gms. Approx			
DI14.475		●				3.2	2.37	3.36	4.75	5.82	7.51	8.89	10.62	3/8"	35	10	20
DI14.650		●				3.5	3.25	4.60	6.50	7.96	10.28	12.16	14.53	Weight (Metals) = 108 gms. Approx			
90° SPRAYNOZZLE													1/2"	45	13.2	25	
DI16.350	●					2.6	1.75	2.47	3.50	4.29	5.53	6.55	7.83	Weight (Metals) = 135.0 gms. Approx			
DI16.400	●					2.9	2.00	2.83	4.00	4.90	6.32	7.48	8.94	3/4"	57	16	32
DI16.475		●				3.2	2.37	3.36	4.75	5.82	7.51	8.89	10.62	Weight (Metals) = 630.0 gms. Approx			
DI16.650		●				3.5	3.25	4.60	6.50	7.96	10.28	12.16	14.53	1"	57	18	36
DI16.800		●				3.6	4.00	5.66	8.00	9.80	12.65	14.97	17.89	Weight (Metals) = XX gms. Approx			
DI26.100		●				4.3	5.00	7.07	10.00	12.25	15.81	18.71	22.36				
DI26.125		●				5.1	6.25	8.84	12.50	15.31	19.76	23.39	27.95				
DI26.160		●				5.8	8.00	11.31	16.00	19.60	25.30	29.93	35.78				
DI26.200			●			6.5	10.00	14.14	20.00	24.49	31.62	37.42	44.72				
DI26.225			●			7.3	11.25	15.91	22.50	27.56	35.58	42.09	50.31				
DI26.250			●			9.6	12.50	17.68	25.00	30.62	39.53	46.77	55.90				
DI26.320				●		11.5	16.00	22.63	32.00	39.19	50.60	59.87	71.55				
DI26.400					●	8.5	20.00	28.28	40.00	48.99	63.25	74.83	89.44				
DI26.520					●	10.5	26.00	36.77	52.00	63.69	82.22	97.28	116.28				
120° SPRAYNOZZLE																	
DI18.350	●					2.2	1.75	2.47	3.50	4.29	5.53	6.55	7.83				
DI18.400	●					2.5	2.00	2.83	4.00	4.90	6.32	7.48	8.94				
DI18.475		●				2.9	2.37	3.36	4.75	5.82	7.51	8.89	10.62				
DI18.650		●				3.5	3.25	4.60	6.50	7.96	10.28	12.16	14.53				
DI18.800		●				3.6	4.00	5.66	8.00	9.80	12.65	14.97	17.89				
DI28.100		●				4.3	5.00	7.07	10.00	12.25	15.81	18.71	22.36				
DI28.125		●				5.1	6.25	8.84	12.50	15.31	19.76	23.39	27.95				
DI28.160		●	●			5.8	8.00	11.31	16.00	19.60	25.30	29.93	35.78				
DI28.200			●			6.5	10.00	14.14	20.00	24.49	31.62	37.42	44.72				
DI28.225			●			7.3	11.25	15.91	22.50	27.56	35.58	42.09	50.31				
DI28.250			●			9.6	12.50	17.68	25.00	30.62	39.53	46.77	55.90				
DI28.320				●		11.5	16.00	22.63	32.00	39.19	50.60	59.87	71.55				
DI28.400					●	8.5	20.00	28.28	40.00	48.99	63.25	74.83	89.44				
DI28.520					●	10.5	26.00	36.77	52.00	63.69	82.22	97.28	116.28				
DI28.650					●	11.7	32.50	45.96	65.00	79.61	102.77	121.60	145.34				
DI28.720					●	12.4	36.00	50.91	72.00	88.18	113.8	134.7	161.0				
DI28.800					●	13.0	40.00	56.57	80.00	97.98	126.49	149.67	178.89				

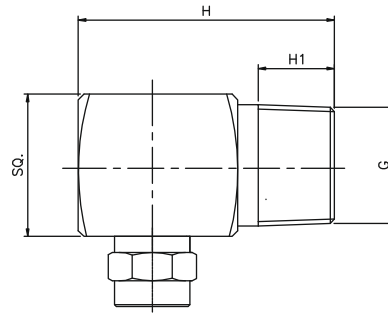
End Connection : X – BSP, Y - BSPT, Z – NPT Available.

DJ Series Tangential Entry Vaneless Full Cone Spray Nozzles

DJ



TWO PIECE BODY
TANGENTIAL ENTRY FULL CONE



Typical Applications :

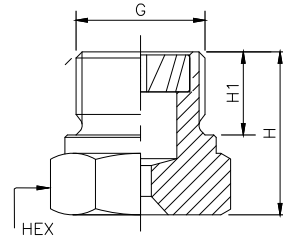
Washing and cleaning cooling of gas or solid product surface spraying Improvement of chemical reactions.

MODEL NO.	CONNECTION END					ORIFIC SIZE (mm)	FLOW CAPACITY IN LPM AT DIFFERENT PRESSURE							G/A DIMENSION. MM			
	1/4"	3/8"	1/2"	3/4"	1"		PRESSURE [BAR]							CONN.	H	H1	SQ
	BSP	BSP	BSP	BSP	BSP		0.5	1.0	2.0	3.0	5.0	7.0	10.0				
60° SPRAYNOZZLE																	
DJ14.350	●	●				2.6	1.75	2.47	3.50	4.29	5.53	6.55	7.83	1/4"	35	10	20
DJ14.400	●	●				2.9	2.00	2.83	4.00	4.90	6.32	7.48	8.94	Weight (Metals) = 72.0 gms. Approx			
DJ14.475		●				3.2	2.37	3.36	4.75	5.82	7.51	8.89	10.62	3/8"	35	10	20
DJ14.650		●				3.5	3.25	4.60	6.50	7.96	10.28	12.16	14.53	Weight (Metals) = 108.0 gms. Approx			
90° SPRAYNOZZLE														1/2"	45	13.2	25
DJ16.350	●					2.6	1.75	2.47	3.50	4.29	5.53	6.55	7.83	Weight (Metals) = 135.0 gms. Approx			
DJ16.400	●					2.9	2.00	2.83	4.00	4.90	6.32	7.48	8.94	3/4"	57	16	32
DJ16.475		●				3.2	2.37	3.36	4.75	5.82	7.51	8.89	10.62	Weight (Metals) = 630.0 gms. Approx			
DJ16.650		●				3.5	3.25	4.60	6.50	7.96	10.28	12.16	14.53	1"	57	18	36
DJ16.800		●				3.6	4.00	5.66	8.00	9.80	12.65	14.97	17.89	Weight (Metals) = XX gms. Approx			
DJ26.100		●				4.3	5.00	7.07	10.00	12.25	15.81	18.71	22.36				
DJ26.125		●				5.1	6.25	8.84	12.50	15.31	19.76	23.39	27.95				
DJ26.160		●				5.8	8.00	11.31	16.00	19.60	25.30	29.93	35.78				
DJ26.200			●			6.5	10.00	14.14	20.00	24.49	31.62	37.42	44.72				
DJ26.225			●			7.3	11.25	15.91	22.50	27.56	35.58	42.09	50.31				
DJ26.250			●			9.6	12.50	17.68	25.00	30.62	39.53	46.77	55.90				
DJ26.320				●		11.5	16.00	22.63	32.00	39.19	50.60	59.87	71.55				
DJ26.400					●	8.5	20.00	28.28	40.00	48.99	63.25	74.83	89.44				
DJ26.520					●	10.5	26.00	36.77	52.00	63.69	82.22	97.28	116.28				
120° SPRAYNOZZLE																	
DJ18.350	●					2.2	1.75	2.47	3.50	4.29	5.53	6.55	7.83				
DJ18.400	●					2.5	2.00	2.83	4.00	4.90	6.32	7.48	8.94				
DJ18.475		●				2.9	2.37	3.36	4.75	5.82	7.51	8.89	10.62				
DJ18.650		●				3.5	3.25	4.60	6.50	7.96	10.28	12.16	14.53				
DJ18.800		●				3.6	4.00	5.66	8.00	9.80	12.65	14.97	17.89				
DJ28.100		●				4.3	5.00	7.07	10.00	12.25	15.81	18.71	22.36				
DJ28.125		●				5.1	6.25	8.84	12.50	15.31	19.76	23.39	27.95				
DJ28.160		●	●			5.8	8.00	11.31	16.00	19.60	25.30	29.93	35.78				
DJ28.200			●			6.5	10.00	14.14	20.00	24.49	31.62	37.42	44.72				
DJ28.225			●			7.3	11.25	15.91	22.50	27.56	35.58	42.09	50.31				
DJ28.250			●			9.6	12.50	17.68	25.00	30.62	39.53	46.77	55.90				
DJ28.320				●		11.5	16.00	22.63	32.00	39.19	50.60	59.87	71.55				
DJ28.400					●	8.5	20.00	28.28	40.00	48.99	63.25	74.83	89.44				
DJ28.520					●	10.5	26.00	36.77	52.00	63.69	82.22	97.28	116.28				
DJ28.650					●	11.7	32.50	45.96	65.00	79.61	102.77	121.60	145.34				
DJ28.720					●	12.4	36.00	50.91	72.00	88.18	113.8	134.7	161.0				
DJ28.800					●	13.0	40.00	56.57	80.00	97.98	126.49	149.67	178.89				

End Connection : X – BSP, Y - BSPT, Z – NPT Available.

ABC Angular Full Cone Spray Nozzles

DM



DM Series ABC Angular Full Cone Spray Nozzle form uniform spray pattern and spray coverage. It provides solid full cone pattern with uniform spray distribution of medium to large size drops resulting from their unique vane design.

Characteristic : Angular drill disc vane design

Type : Full cone spray pattern

45° SPRAY ANGLE	CONNECTION END			ORIFICE SIZE (mm)	FLOW CAPACITY IN LPM AT DIFFERENT PRESSURE							G/A DIMENSION. MM				
	1/2"	3/4"	1"		PRESSURE [BAR]							CONN.	H	H1	D	HEX
MODEL NO.	BSP BSPT NPT	BSP BSPT NPT	BSP BSPT NPT		0.5	1.0	2.0	3.0	5.0	7.0	10.0	1/2"	H	H1	D	HEX
DM13.400	●			2.3	2.00	2.83	4.00	4.90	6.32	7.48	8.94	1/2"	32	13	21	22
DM13.475	●			2.5	2.37	3.36	4.75	5.82	7.51	8.89	10.62	Weight (Metals) = 71 gms. Approx				
DM13.650	●			2.9	3.25	4.60	6.50	7.96	10.28	12.16	14.53	3/4"	42	15	32	27
DM13.800	●			3.3	4.00	5.66	8.00	9.80	12.65	14.97	17.89	Weight (Metals) = xx gms. Approx				
DM23.100	●			3.6	5.00	7.07	10.00	12.25	15.81	18.71	22.36	1"	56	18	39	36
DM23.125	●	●		4.1	6.25	8.84	12.50	15.31	19.76	23.39	27.95	Weight (Metals) = xx gms. Approx				
DM23.160	●	●		4.6	8.00	11.31	16.00	19.60	25.30	29.93	35.78					
DM23.180		●		5.9	9.00	12.73	18.00	22.05	28.46	33.67	40.25					
DM23.200		●	●	5.2	10.00	14.14	20.00	24.49	31.62	37.42	44.72					
DM23.225		●	●	5.5	11.25	15.91	22.50	27.56	35.58	42.09	50.31					
DM23.250		●	●	5.8	12.50	17.68	25.00	30.62	39.53	46.77	55.90					
DM23.320		●	●	6.5	16.00	22.63	32.00	39.19	50.60	59.87	71.55					
DM23.400			●	7.3	20.00	28.28	40.00	48.99	63.25	74.83	89.44					
DM23.520			●	8.3	26.00	36.77	52.00	63.69	82.22	97.28	116.28					
DM23.650			●	9.3	32.50	45.96	65.00	79.61	102.77	121.60	145.34					
DM23.720			●	9.8	36.00	50.91	72.00	88.18	113.8	134.7	161.0					

60° SPRAY ANGLE	CONNECTION END			ORIFICE SIZE (mm)	FLOW CAPACITY IN LPM AT DIFFERENT PRESSURE							G/A DIMENSION. MM				
	1/2"	3/4"	1"		PRESSURE [BAR]							CONN.	H	H1	D	HEX
MODEL NO.	BSP BSPT NPT	BSP BSPT NPT	BSP BSPT NPT		0.5	1.0	2.0	3.0	5.0	7.0	10.0	CONN.	H	H1	D	HEX
DM14.400	●			2.3	2.00	2.83	4.00	4.90	6.32	7.48	8.94	1/2"	32	13	21	22
DM14.475	●			2.5	2.37	3.36	4.75	5.82	7.51	8.89	10.62	Weight (Metals) = 71 gms. Approx				
DM14.650	●			2.9	3.25	4.60	6.50	7.96	10.28	12.16	14.53	3/4"	42	15	32	27
DM14.800	●			3.3	4.00	5.66	8.00	9.80	12.65	14.97	17.89	Weight (Metals) = xx gms. Approx				
DM24.100	●			3.6	5.00	7.07	10.00	12.25	15.81	18.71	22.36	1"	56	18	39	36
DM24.125	●	●		4.1	6.25	8.84	12.50	15.31	19.76	23.39	27.95	Weight (Metals) = xx gms. Approx				
DM24.160	●	●		4.6	8.00	11.31	16.00	19.60	25.30	29.93	35.78					
DM24.180		●		5.9	9.00	12.73	18.00	22.05	28.46	33.67	40.25					
DM24.200		●	●	5.2	10.00	14.14	20.00	24.49	31.62	37.42	44.72					
DM24.225		●	●	5.5	11.25	15.91	22.50	27.56	35.58	42.09	50.31					
DM24.250		●	●	5.8	12.50	17.68	25.00	30.62	39.53	46.77	55.90					
DM24.320		●	●	6.5	16.00	22.63	32.00	39.19	50.60	59.87	71.55					
DM24.400			●	7.3	20.00	28.28	40.00	48.99	63.25	74.83	89.44					
DM24.520			●	8.3	26.00	36.77	52.00	63.69	82.22	97.28	116.28					
DM24.650			●	9.3	32.50	45.96	65.00	79.61	102.77	121.60	145.34					
DM24.720			●	9.8	36.00	50.91	72.00	88.18	113.8	134.7	161.0					

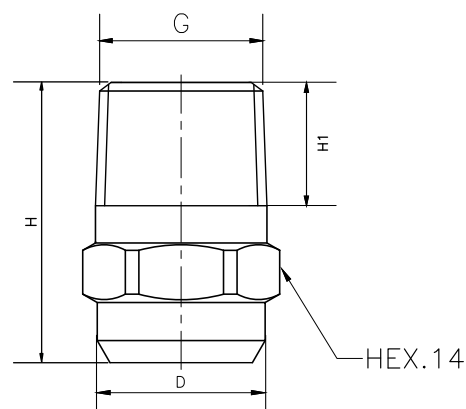
ABC Angular Full Cone Spray Nozzles

90° SPRAY ANGLE	CONNECTION END			ORIFICE SIZE (mm)	FLOW CAPACITY IN LPM AT DIFFERENT PRESSURE							G/A DIMENSION. MM				
	1/2"	3/4"	1"		PRESSURE [BAR]											
MODEL NO.	BSP BSPT NPT	BSP BSPT NPT	BSP BSPT NPT		0.5	1.0	2.0	3.0	5.0	7.0	10.0	CONN.	H	H1	D	HEX
DM16.400	●			2.3	2.00	2.83	4.00	4.90	6.32	7.48	8.94	1/2"	32	13	21	22
DM16.475	●			2.5	2.37	3.36	4.75	5.82	7.51	8.89	10.62	Weight (Metals) = 71 gms. Approx				
DM16.650	●			2.9	3.25	4.60	6.50	7.96	10.28	12.16	14.53	3/4"	42	15	32	27
DM16.800	●			3.3	4.00	5.66	8.00	9.80	12.65	14.97	17.89	Weight (Metals) = xx gms. Approx				
DM26.100	●			3.6	5.00	7.07	10.00	12.25	15.81	18.71	22.36	1"	56	18	39	36
DM26.125	●	●		4.1	6.25	8.84	12.50	15.31	19.76	23.39	27.95	Weight (Metals) = xx gms. Approx				
DM26.160	●	●		4.6	8.00	11.31	16.00	19.60	25.30	29.93	35.78					
DM26.180		●		5.9	9.00	12.73	18.00	22.05	28.46	33.67	40.25					
DM26.200		●	●	5.2	10.00	14.14	20.00	24.49	31.62	37.42	44.72					
DM26.225		●	●	5.5	11.25	15.91	22.50	27.56	35.58	42.09	50.31					
DM26.250		●	●	5.8	12.50	17.68	25.00	30.62	39.53	46.77	55.90					
DM26.320		●	●	6.5	16.00	22.63	32.00	39.19	50.60	59.87	71.55					
DM26.400		●	●	7.3	20.00	28.28	40.00	48.99	63.25	74.83	89.44					
DM26.520		●	●	8.3	26.00	36.77	52.00	63.69	82.22	97.28	116.28					
DM26.650			●	9.3	32.50	45.96	65.00	79.61	102.77	121.60	145.34					
DM26.720			●	9.8	36.00	50.91	72.00	88.18	113.8	134.7	161.0					

130° SPRAY ANGLE	CONNECTION END			ORIFICE SIZE (mm)	FLOW CAPACITY IN LPM AT DIFFERENT PRESSURE							G/A DIMENSION. MM				
	1/2"	3/4"	1"		PRESSURE [BAR]											
MODEL NO.	BSP BSPT NPT	BSP BSPT NPT	BSP BSPT NPT		0.5	1.0	2.0	3.0	5.0	7.0	10.0	CONN.	H	H1	D	HEX
DM19.400	●			2.3	2.00	2.83	4.00	4.90	6.32	7.48	8.94	1/2"	32	13	21	22
DM19.475	●			2.5	2.37	3.36	4.75	5.82	7.51	8.89	10.62	Weight (Metals) = 71 gms. Approx				
DM19.650	●			2.9	3.25	4.60	6.50	7.96	10.28	12.16	14.53	3/4"	42	15	32	27
DM19.800	●			3.3	4.00	5.66	8.00	9.80	12.65	14.97	17.89	Weight (Metals) = xx gms. Approx				
DM29.100	●			3.6	5.00	7.07	10.00	12.25	15.81	18.71	22.36	1"	56	18	39	36
DM29.125	●	●		4.1	6.25	8.84	12.50	15.31	19.76	23.39	27.95	Weight (Metals) = xx gms. Approx				
DM29.160	●	●		4.6	8.00	11.31	16.00	19.60	25.30	29.93	35.78					
DM29.180		●	●	5.9	9.00	12.73	18.00	22.05	28.46	33.67	40.25					
DM29.200		●	●	5.2	10.00	14.14	20.00	24.49	31.62	37.42	44.72					
DM29.225		●	●	5.5	11.25	15.91	22.50	27.56	35.58	42.09	50.31					
DM29.250		●	●	5.8	12.50	17.68	25.00	30.62	39.53	46.77	55.90					
DM29.320		●	●	6.5	16.00	22.63	32.00	39.19	50.60	59.87	71.55					
DM29.400		●	●	7.3	20.00	28.28	40.00	48.99	63.25	74.83	89.44					
DM29.520		●	●	8.3	26.00	36.77	52.00	63.69	82.22	97.28	116.28					
DM29.650			●	9.3	32.50	45.96	65.00	79.61	102.77	121.60	145.34					
DM29.720			●	9.8	36.00	50.91	72.00	88.18	113.8	134.7	161.0					

Full Cone Spray Nozzles (Mist Spray)

DN



DN series mist spray nozzle offers semi Full cone spray pattern.

Micro-finish of tip & vane permitting flow through the slots of the vane and extremely close manufacturing tolerances ensures accurate flow capacity control.

Application :-

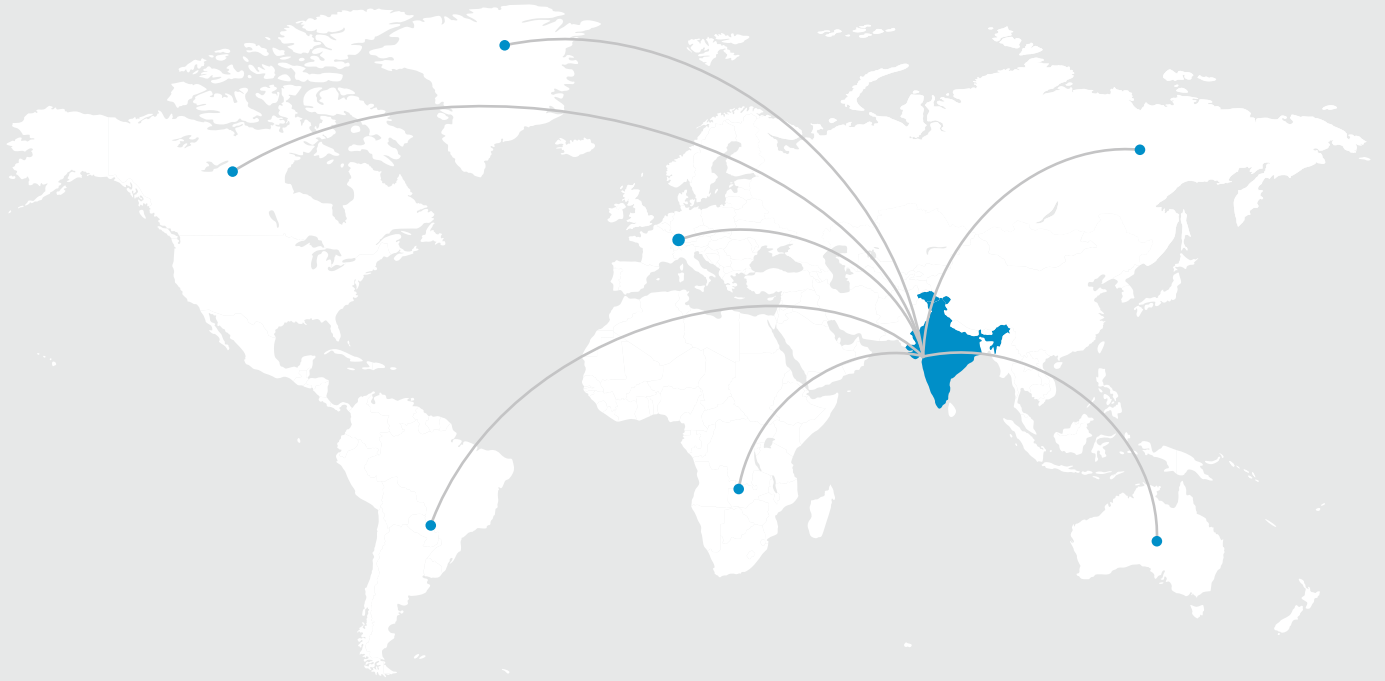
Injection quill, Dust suppression, Humidification, Mist spray applications

Range :-

Spray Angle : 45°, 60°, 90°.

Connection : 1/4" BSP/BSPT/NPT (Male)

MODEL NO.	END CONNECTION		ORIFICE SIZE (mm)	FLOW CAPACITY IN LPM AT DIFFERENT PRESSURE						G/A DIMENSION. MM							
	1/4"			PRESSURE [BAR]						CONN.	H	H1	D	HEX			
	BSP	BSPT													NPT		
45° SPRAY ANGLE																	
DN13.030	●		1.0	0.3	0.37	0.47	0.56	0.67	0.82	1/4"	22	10	13	14			
DN13.040	●		1.1	0.4	0.49	0.63	0.75	0.89	1.10	Weight (Metals) = XX gms. Approx							
DN13.050	●		1.2	0.5	0.61	0.79	0.94	1.12	1.37								
DN13.060	●		1.4	0.6	0.73	0.95	1.12	1.34	1.64								
DN13.070	●		1.5	0.7	0.86	1.11	1.31	1.57	1.92								
DN13.080	●		1.6	0.8	0.98	1.26	1.50	1.79	2.19								
DN13.090	●		1.7	0.9	1.10	1.42	1.68	2.01	2.46								
DN13.100	●		1.8	1.0	1.22	1.58	1.87	2.24	2.74								
60° SPRAY ANGLE																	
DN14.030	●		1.0	0.3	0.37	0.47	0.56	0.67	0.82								
DN14.040	●		1.1	0.4	0.49	0.63	0.75	0.89	1.10								
DN14.050	●		1.2	0.5	0.61	0.79	0.94	1.12	1.37								
DN14.060	●		1.4	0.6	0.73	0.95	1.12	1.34	1.64								
DN14.070	●		1.5	0.7	0.86	1.11	1.31	1.57	1.92								
DN14.080	●		1.6	0.8	0.98	1.26	1.50	1.79	2.19								
DN14.090	●		1.7	0.9	1.10	1.42	1.68	2.01	2.46								
DN14.100	●		1.8	1.0	1.22	1.58	1.87	2.24	2.74								
90° SPRAY ANGLE																	
DN16.030	●		1.0	0.3	0.37	0.47	0.56	0.67	0.82								
DN16.040	●		1.1	0.4	0.49	0.63	0.75	0.89	1.10								
DN16.050	●		1.2	0.5	0.61	0.79	0.94	1.12	1.37								
DN16.060	●		1.4	0.6	0.73	0.95	1.12	1.34	1.64								
DN16.070	●		1.5	0.7	0.86	1.11	1.31	1.57	1.92								
DN16.080	●		1.6	0.8	0.98	1.26	1.50	1.79	2.19								
DN16.090	●		1.7	0.9	1.10	1.42	1.68	2.01	2.46								
DN16.100	●		1.8	1.0	1.22	1.58	1.87	2.24	2.74								



OUR BRANCHES

Regd. Office (Mumbai) :

Spraytech House, Plot A-132, Road No. 23, Spraytech Circle,
Wagle Indl. Estate, Thane (W) - 400 604. Mumbai Maharashtra, (India)
Tel. : 91-022-2582 8929 / 2735 / 2736
E-mail :- sales@spraytechindia.com
sales1@spraytechindia.com

Rabale Plant 1 (Navi Mumbai) :

Spraytech Systems (I) Pvt. Ltd., Plot No.: R-513, MIDC, TTC Industrial
Area, Rabale, Navi Mumbai - 400 701.

Rabale Plant 2 (Navi Mumbai) :

R-446, T.T.C. Industrial Area, MIDC Rabale,
Navi Mumbai - 400 701.

Branch Office (Pune) :

White House, Survey no. 161, Near
Bhosale Garden Hadapsar, Pune 411028

Indapur Plant (Pune) :

Spraytech Systems (I) Pvt. Ltd., Plot No.: A-5, Indapur Five Star
Industrial Area, Village - Loni Devkar Balpudi, Tal. - Indapur,
Dist. - Pune. - 413132

